



Message Implementation Guideline

CALINF

based on

CALINF

Vessel call information message

UN D.16B S4

Version: 1
Variant: 0
Issue date: 2017/09/10
Author: SARS EDI TEAM

1 Message Structure.....	2
2 Branching Diagram	3
3 Segments	4

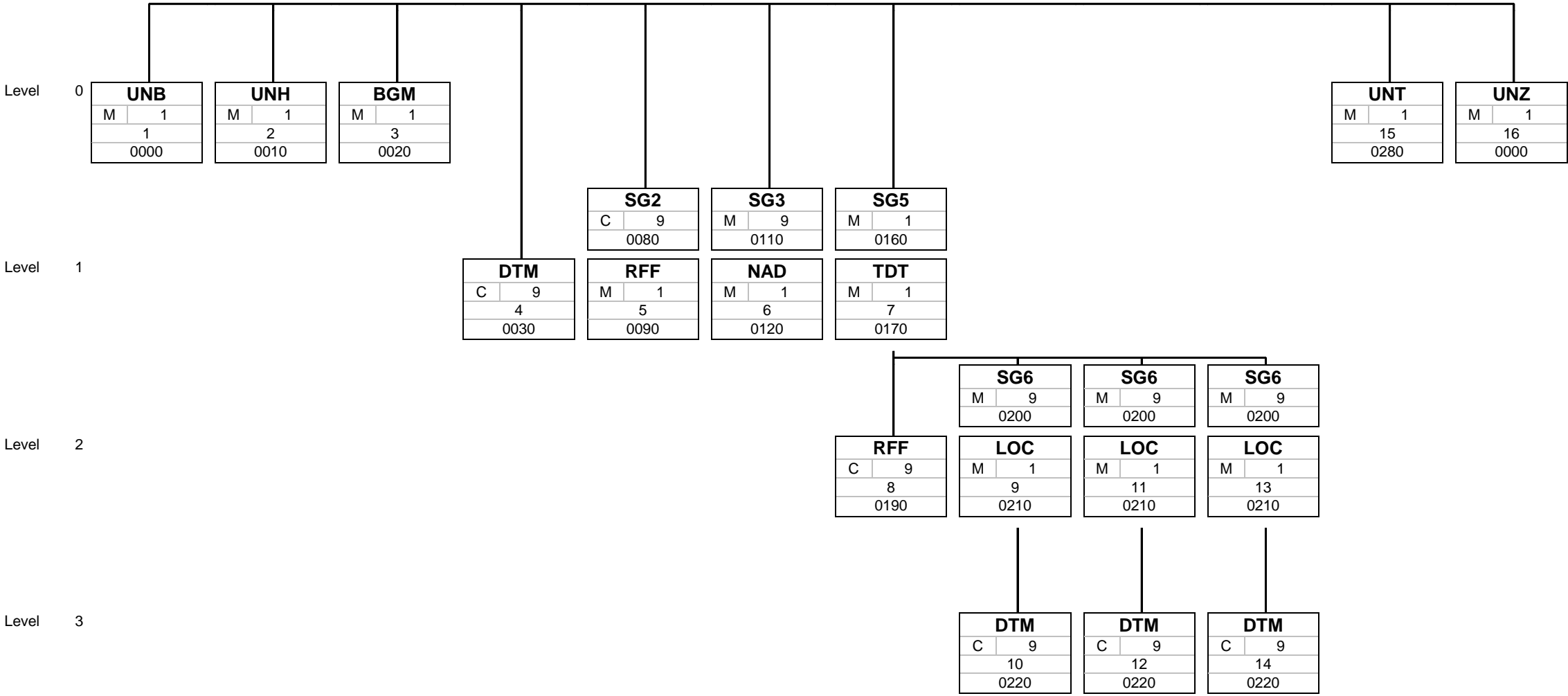
Structure / Table of Contents

Counter	No	Tag	St	MaxOcc	Level	Content
0000	1	UNB	M	1	0	Interchange header
0010	2	UNH	M	1	0	Message header
0020	3	BGM	M	1	0	Beginning of message
0030	4	DTM	C	9	1	Date/time/period
0080		SG2	C	9	1	RFF
0090	5	RFF	M	1	1	Reference
0110		SG3	M	9	1	NAD
0120	6	NAD	M	1	1	Name and address
0160		SG5	M	1	1	TDT-RFF-SG6-SG6-SG6
0170	7	TDT	M	1	1	Transport information
0190	8	RFF	C	9	2	Reference
0200		SG6	M	9	2	Departure Details
0210	9	LOC	M	1	2	Place/location identification
0220	10	DTM	C	9	3	Date/time/period
0200		SG6	M	9	2	Discharge Details
0210	11	LOC	M	1	2	Place/location identification
0220	12	DTM	C	9	3	Date/time/period
0200		SG6	M	9	2	Call Details
0210	13	LOC	M	1	2	Place/location identification
0220	14	DTM	C	9	3	Date/time/period
0280	15	UNT	M	1	0	Message trailer
0000	16	UNZ	M	1	0	Interchange trailer

Counter = Counter of segment/group within the standard
 No = Consecutive segment number
 MaxOcc = Maximum occurrence of the segment/group

St = Status
 EDIFACT: M=Mandatory, C=Conditional
 User specific: R=Required, O=Optional, D=Dependent,
 A=Advised, N=Not used

Branching Diagram of Used Segments/Groups



Tag
St MaxOcc
No
Counter

Tag = Segment/Group Tag
 St = Status (M=Mandatory, C=Conditional, R=Required, O=Optional, A=Advised, D=Dependent)
 MaxOcc = Maximum occurrence of the segment/group
 No = Consecutive segment number
 Counter = Counter of segment/group within the standard

Segments

Counter No	Tag	St	MaxOcc	Level	Name	
0000	1	UNB	M	1	0	Interchange header

		Standard	Implementation								Business Rules
Tag	Name	St Format	St Format	Usage / Remark	SCH	ARR	ASC	AAR	TRA	TRS	
UNB											
S001	Syntax identifier	M	M								
0001	Syntax identifier	M a4	M a4	UNOB = UN/ECE level B	M	M	M	M	M	M	
0002	Syntax version number	M an1	M an1	4 = Version 4	M	M	M	M	M	M	
0080	Service code list directory version number	C an..6	N	Not used							
0133	Character encoding, coded	C an..3	N	Not used							
0076	Syntax release number	C an2	N	Not used							
S002	Interchange sender	M	M								
0004	Interchange sender identification	M an..35	M an..35	SARS assigned EDI Profile Code including dual code (if applicable)	M	M	M	M	M	M	
0007	Identification code qualifier	C an..4	N	Not used							
0008	Interchange sender internal identification	C an..35	C an..35		M	M	M	M	M	M	
0042	Interchange sender internal sub-identification	C an..35	C an..35		M	M	M	M	M	M	
S003	Interchange recipient	M	M								
0010	Interchange recipient identification	M an..35	M an..35	SARSCAR = Production System SARSCART = Test System	M	M	M	M	M	M	
0007	Identification code qualifier	C an..4	N	Not used							
0014	Interchange recipient internal identification	C an..35	N	Not used							
0046	Interchange recipient internal sub-identification	C an..35	N	Not used							
S004	Date and time of preparation	M	M								
0017	Date	M n8	M n8		M	M	M	M	M	M	
0019	Time	M n4	M n4		M	M	M	M	M	M	
0020	Interchange control reference	M an..14	M an..14		M	M	M	M	M	M	
S005	Recipient reference/password details	C	N								
0022	Recipient reference/password	M an..14	N	Not used							
0025	Recipient reference/password qualifier	C an2	N	Not used							
0026	Application reference	C an..14	C an..14	CALINF = Call Information Message	O	O	O	O	O	O	
0029	Processing priority code	C a1	N	Not used							
0031	Acknowledgement request	C n1	C n1	1 = Acknowledgement requested	O	O	O	O	O	O	
0032	Interchange agreement identifier	C an..35	C an..35	Required for X.400	C	C	C	C	C	C	
0035	Test indicator	C n1	C n1	Required if test, omit if production 1 = Interchange is a test	C	C	C	C	C	C	

Remark:

Example:

UNB+UNOB:4+12345678ABC.:ABCDEFGHIJKLMNOPS:PCAS2+X+20170910:1331+1234567890++X++1+X.400 Mailbox+1'

No = Consecutive segment number
 MaxOcc = Maximum occurrence of the segment/group
 Counter = Counter of segment/group within the standard
 St = Status
 EDIFACT: M=Mandatory, C=Conditional
 User specific: M=Mandatory, O=Optional, C=Conditional

Counter	No	Tag	St	MaxOcc	Level	Name
0010	2	UNH	M	1	0	Message header

Tag	Name	Standard		Implementation		Usage / Remark	SCH	ARR	ASC	AAR	TRA	TRS	Business Rules
		St	Format	St	Format								
UNH													
0062	Message reference number	M	an..14	M	an..14								
S009	Message identifier	M		M									
0065	Message type	M	an..6	M	an..6	CALINF = Vessel call information message							
0052	Message version number	M	an..3	M	an..3	D = Draft version/UN/EDIFACT Directory							
0054	Message release number	M	an..3	M	an..3	16B = Release 2016 - B							
0051	Controlling agency, coded	M	an..3	M	an..3	UN = UN/CEFACT							
0057	Association assigned code	C	an..6	C	an..6	RCG001 = RCG Version 1							
0110	Code list directory version number	C	an..6	N		Not used							
0113	Message type sub-function identification	C	an..6	N		Not used							
0068	Common access reference	C	an..35	N		Not used							
S010	Status of the transfer	C		N		Not used							
0070	Sequence of transfers	M	n..2	N		Not used							
0073	First and last transfer	C	a1	N		Not used							
S016	Message subset identification	C		N		Not used							
0115	Message subset identification	M	an..14	N		Not used							
0116	Message subset version number	C	an..3	N		Not used							
0118	Message subset release number	C	an..3	N		Not used							
0051	Controlling agency, coded	C	an..3	N		Not used							
S017	Message implementation guideline identification	C		N		Not used							
0121	Message implementation guideline identification	M	an..14	N		Not used							
0122	Message implementation guideline version number	C	an..3	N		Not used							
0124	Message implementation guideline release number	C	an..3	N		Not used							
0051	Controlling agency, coded	C	an..3	N		Not used							
S018	Scenario identification	C		N		Not used							
0127	Scenario identification	M	an..14	N		Not used							
0128	Scenario version number	C	an..3	N		Not used							
0130	Scenario release number	C	an..3	N		Not used							
0051	Controlling agency, coded	C	an..3	N		Not used							

Remark:

Example:

UNH+12345678901234+CALINF:D:16B:UN:X'

No = Consecutive segment number
 MaxOcc = Maximum occurrence of the segment/group
 Counter = Counter of segment/group within the standard

St = Status
 EDIFACT: M=Mandatory, C=Conditional
 User specific: M=Mandatory, O=Optional, C=Conditional

Counter No	Tag	St	MaxOcc	Level	Name	
0020	3	BGM	M	1	0	Beginning of message

		Standard	Implementation		SCH	ARR	ASC	AAR	TRA	TRS	Business Rules
Tag	Name	St Format	St Format	Usage / Remark							
BGM											
C002	Document/message name	C	C								
1001	Document name code	C an..3	M an..3	96 = Impending arrival 98 = Arrival information	M	M	M	M	M	M	
1131	Code list identification code	C an..17	N	Not used							
3055	Code list responsible agency code	C an..3	N	Not used							
1000	Document name	C an..35	C an..35	DOCUMENT TYPE SCH = Maritime Schedule ARR = Maritime Arrival ASC = Air Schedule AAR = Air Arrival TRA = Rail Arrival TRS = Rail Schedule	M	M	M	M	M	M	
C106	Document/message identification	C	C								
1004	Document identifier	C an..70	M an..35	DOCUMENT/MESSAGE NUMBER A unique reference number assigned to the electronic document.	M	M	M	M	M	M	
1056	Version identifier	C an..9	N	Not used							
1060	Revision identifier	C an..6	N	Not used							
1225	Message function code	C an..3	M an..3	1 = Cancellation 4 = Change 9 = Original MESSAGE FUNCTION	M	M	M	M	M	M	
4343	Response type code	C an..3	N	Not used							
1373	Document status code	C an..3	N	Not used							
3453	Language name code	C an..3	N	Not used							

Remark:

Example:

BGM+96::SCH+1234567890+1'

No = Consecutive segment number
 MaxOcc = Maximum occurrence of the segment/group
 Counter = Counter of segment/group within the standard
 St = Status
 EDIFACT: M=Mandatory, C=Conditional
 User specific: M=Mandatory, O=Optional, C=Conditional

Counter No	Tag	St	MaxOcc	Level	Name
------------	-----	----	--------	-------	------

0030 4 **DTM** C 9 1 Date/time/period

		Standard	Implementation		SCH	ARR	ASC	AAR	TRA	TRS	Business Rules
Tag	Name	St Format	St Format	Usage / Remark							
DTM											
C507	Date/time/period	M	M								
2005	Date or time or period function code qualifier	M an..3	M an..3	137 = Document issue date time							
2380	Date or time or period text	C an..35	M n12	DOCUMENT DATE/TIME	M	M	M	M	M	M	
2379	Date or time or period format code	C an..3	C an..3	203 = CCYYMMDDHHMM							

Remark:

Example:
DTM+137:201709101344:203'

No = Consecutive segment number
 MaxOcc = Maximum occurrence of the segment/group
 Counter = Counter of segment/group within the standard
 St = Status
 EDIFACT: M=Mandatory, C=Conditional
 User specific: M=Mandatory, O=Optional, C=Conditional

Counter No	Tag	St	MaxOcc	Level	Name
0080	SG2	C	9	1	RFF
0090	5 RFF	M	1	1	Reference

		Standard	Implementation			SCH	ARR	ASC	AAR	TRA	TRS	Business Rules
Tag	Name	St Format	St Format	Usage / Remark								
RFF												
C506	Reference	M	M									
1153	Reference code qualifier	M an..3	M an..3	ACW = Reference number to previous message								
1154	Reference identifier	C an..70	C an..35	Mandatory should this message be an amendment or cancellation to a previous message. DOCUMENT TO BE AMENDED		C	C	C	C	C	C	
1156	Document line identifier	C an..6	N	Not used								
1056	Version identifier	C an..9	N	Not used								
1060	Revision identifier	C an..6	N	Not used								

Remark:

Example:

RFF+ACW:123456780'

Counter No	Tag	St	MaxOcc	Level	Name
0110	SG3	M	9	1	NAD
0120	6 NAD	M	1	1	Name and address

		Standard	Implementation		SCH	ARR	ASC	AAR	TRA	TRS	Business Rules
Tag	Name	St Format	St Format	Usage / Remark							
NAD											
3035	Party function code qualifier	M an..3	M an..3	MS = Document/message issuer/sender							
C082	Party identification details	C	C								
3039	Party identifier	M an..35	M an..35	MESSAGE SENDER Must be the same as the sender id in the UNB	M	M	M	M	M	M	
1131	Code list identification code	C an..17	C an..17	172 = Carrier Code							
3055	Code list responsible agency code	C an..3	C an..3	20 = BIC (Bureau International des Containeurs) 166 = US, National Motor Freight Classification Association 3 = IATA (International Air Transport Association) ZZZ = South African Revenue Service							
C058	Name and address	C	N								
3124	Name and address description	M an..35	N	Not used							
3124	Name and address description	C an..35	N	Not used							
3124	Name and address description	C an..35	N	Not used							
3124	Name and address description	C an..35	N	Not used							
3124	Name and address description	C an..35	N	Not used							
C080	Party name	C	N								
3036	Party name	M an..70	N	Not used							
3036	Party name	C an..70	N	Not used							
3036	Party name	C an..70	N	Not used							
3036	Party name	C an..70	N	Not used							
3036	Party name	C an..70	N	Not used							
3045	Party name format code	C an..3	N	Not used							
C059	Street	C	N								
3042	Street and number or post office box identifier	M an..35	N	Not used							
3042	Street and number or post office box identifier	C an..35	N	Not used							
3042	Street and number or post office box identifier	C an..35	N	Not used							
3042	Street and number or post office box identifier	C an..35	N	Not used							
3164	City name	C an..35	N	Not used							
C819	Country subdivision details	C	N								
3229	Country subdivision identifier	C an..9	N	Not used							
1131	Code list identification code	C an..17	N	Not used							
3055	Code list responsible agency code	C an..3	N	Not used							
3228	Country subdivision name	C an..70	N	Not used							
3251	Postal identification code	C an..17	N	Not used							
3207	Country identifier	C an..3	N	Not used							

Remark:

Example:

NAD+MS+12345678ABC::20'

No = Consecutive segment number
 MaxOcc = Maximum occurrence of the segment/group
 Counter = Counter of segment/group within the standard
 St = Status
 EDIFACT: M=Mandatory, C=Conditional
 User specific: M=Mandatory, O=Optional, C=Conditional

Counter No	Tag	St	MaxOcc	Level	Name
0160	SG5	M	1	1	TDT-RFF-SG6
0170	7 TDT	M	1	1	Transport information

		Standard	Implementation								Business Rules
Tag	Name	St Format	St Format	Usage / Remark	SCH	ARR	ASC	AAR	TRA	TRS	
TDT											
8051	Transport stage code qualifier	M an..3	M an..3	20 = Main-carriage transport							
8028	Means of transport journey identifier	C an..17	M an..17	CONVEYANCE NUMBER	M	M	M	M	M	M	The voyage, flight number or journey number assigned by the Carrier who owns, operates or leases the means of transport on which the goods are transported.
C220	Mode of transport	C	C								
8067	Transport mode name code	C an..3	M an..3	1 = Maritime transport 2 = Rail transport 4 = Air transport	M	M	M	M	M	M	
8066	Transport mode name	C an..17	N	Not used							
C001	Transport means	C	N								
8179	Transport means description code	C an..8	N	Not used							
1131	Code list identification code	C an..17	N	Not used							
3055	Code list responsible agency code	C an..3	N	Not used							
8178	Transport means description	C an..17	N	Not used							
C040	Carrier	C	C								
3127	Carrier identifier	C an..17	C an..17	CARRIER CODE	M	M	M	M	M	M	The BIC, SCAC, IATA or SARS-assigned code of the party who owns, operates or leases the means of transport on which the goods are transported.
1131	Code list identification code	C an..17	C an..17	172 = Carrier Code							
3055	Code list responsible agency code	C an..3	C an..3	20 = BIC (Bureau International des Containeurs) 166 = US, National Motor Freight Classification Association 3 = IATA (International Air Transport Association)							
3126	Carrier name	C an..35	C an..35	CARRIER NAME	M	M	O	O	O	O	
8101	Transit direction indicator code	C an..3	C an..3								
C401	Excess transportation information	C	N								
8457	Excess transportation reason code	M an..3	N	Not used							
8459	Excess transportation responsibility code	M an..3	N	Not used							
7130	Customer shipment authorisation identifier	C an..17	N	Not used							
C222	Transport identification	C	C								
8213	Transport means identification name identifier	C an..35	M an..9	ID OF MEANS OF TRANSPORT	M	M	M	M			Radio Call Sign/Registration Number of aircraft
1131	Code list identification code	C an..17	C an..17	103 = Call sign directory 146 = Means of transport identification							
3055	Code list responsible agency code	C an..3	N	Not used							
8212	Transport means identification name	C an..70	C an..70	NAME OF MEANS OF TRANSPORT	M	M	O	O	O	O	
8453	Transport means nationality code	C an..3	C an..3	NATIONALITY OF MEANS OF TRANSPORT	O	O	O	O	O	O	
8281	Transport means ownership indicator code	C an..3	N	Not used							
C003	Power type	C	N								
7041	Power type code	C an..3	N	Not used							
1131	Code list identification code	C an..17	N	Not used							
3055	Code list responsible agency code	C an..3	N	Not used							

No = Consecutive segment number
 MaxOcc = Maximum occurrence of the segment/group
 Counter = Counter of segment/group within the standard

St = Status
 EDIFACT: M=Mandatory, C=Conditional
 User specific: M=Mandatory, O=Optional, C=Conditional

Standard		Implementation									
Tag	Name	St Format	St Format	Usage / Remark	SCH	ARR	ASC	AAR	TRA	TRS	Business Rules
7040	Power type description	C an..17	N	Not used							

Remark:

Example:

TDT+20+AAA345667+1++ABCD:172:20:X+BS++ASER543:::X:AD'

Counter No	Tag	St	MaxOcc	Level	Name
0160	SG5	M	1	1	TDT-RFF-SG6
0190	8 RFF	C	9	2	Reference

		Standard	Implementation		SCH	ARR	ASC	AAR	TRA	TRS	Business Rules
Tag	Name	St Format	St Format	Usage / Remark							
RFF											
C506	Reference	M	M								
1153	Reference code qualifier	M an..3	M an..3	ACL = Principal reference number							
1154	Reference identifier	C an..70	M an..17	PRINCIPAL CARRIER CONVEYANCE NUMBER	M	M	M	M	M	M	The voyage, flight number or journey number assigned by the Carrier who owns, operates or leases the means of transport on which the goods are transported.
1156	Document line identifier	C an..6	N	Not used							
1056	Version identifier	C an..9	N	Not used							
1060	Revision identifier	C an..6	N	Not used							

Remark:

Example:

RFF+ACL:DDD4455667'

Counter No	Tag	St	MaxOcc	Level	Name
0200	SG6	M	9	2	Departure Details
0210	9 LOC	M	1	2	Place/location identification

Standard		Implementation									Business Rules
Tag	Name	St Format	St Format	Usage / Remark	SCH	ARR	ASC	AAR	TRA	TRS	
LOC											
3227	Location function code qualifier	M an..3	M an..3	5 = Place of departure PLACE IDENTIFIER	M	M	M	M	M	M	
C517	Location identification	C	C								
3225	Location identifier	C an..35	M an5	PLACE OF DEPARTURE	M		M			M	
1131	Code list identification code	C an..17	C an..17	139 = Port 145 = Airport							
3055	Code list responsible agency code	C an..3	C an..3	6 = UN/ECE (United Nations - Economic Commission for Europe) 3 = IATA (International Air Transport Association)							
3224	Location name	C an..256	N	Not used							
C519	Related location one identification	C	N								
3223	First related location identifier	C an..35	N	Not used							
1131	Code list identification code	C an..17	N	Not used							
3055	Code list responsible agency code	C an..3	N	Not used							
3222	First related location name	C an..70	N	Not used							
C553	Related location two identification	C	N								
3233	Second related location identifier	C an..35	N	Not used							
1131	Code list identification code	C an..17	N	Not used							
3055	Code list responsible agency code	C an..3	N	Not used							
3232	Second related location name	C an..70	N	Not used							
5479	Relation code	C an..3	N	Not used							

Remark:

Example:

LOC+5+GBAAA:139:6'

Counter No	Tag	St	MaxOcc	Level	Name
0200	SG6	M	9	2	Departure Details
0220 10	DTM	C	9	3	Date/time/period

		Standard	Implementation		SCH	ARR	ASC	AAR	TRA	TRS	Business Rules
Tag	Name	St Format	St Format	Usage / Remark							
DTM											
C507	Date/time/period	M	M								
2005	Date or time or period function code qualifier	M an..3	M an..3	136 = Transport means departure date time, actual	M	M	M	M	M	M	
2380	Date or time or period text	C an..35	M n12	DATE/TIME OF DEPARTURE	M		M			M	
2379	Date or time or period format code	C an..3	C an..3	203 = CCYYMMDDHHMM							

Remark:

Example:
DTM+136:201709010600:203'

Counter No	Tag	St	MaxOcc	Level	Name
0200	SG6	M	9	2	Discharge Details
0210 11	LOC	M	1	2	Place/location identification

		Standard	Implementation		SCH	ARR	ASC	AAR	TRA	TRS	Business Rules
Tag	Name	St Format	St Format	Usage / Remark							
LOC											
3227	Location function code qualifier	M an..3	M an..3	11 = Place of discharge PLACE IDENTIFIER	M	M	M	M	M	M	
C517	Location identification	C	C								
3225	Location identifier	C an..35	C an5	PLACE OF DEPARTURE		M		M	M		
1131	Code list identification code	C an..17	C an..17	139 = Port 145 = Airport							
3055	Code list responsible agency code	C an..3	C an..3	6 = UN/ECE (United Nations - Economic Commission for Europe) 3 = IATA (International Air Transport Association)							
3224	Location name	C an..256	N	Not used							
C519	Related location one identification	C	N								
3223	First related location identifier	C an..35	N	Not used							
1131	Code list identification code	C an..17	N	Not used							
3055	Code list responsible agency code	C an..3	N	Not used							
3222	First related location name	C an..70	N	Not used							
C553	Related location two identification	C	N								
3233	Second related location identifier	C an..35	N	Not used							
1131	Code list identification code	C an..17	N	Not used							
3055	Code list responsible agency code	C an..3	N	Not used							
3232	Second related location name	C an..70	N	Not used							
5479	Relation code	C an..3	N	Not used							

Remark:

Example:

LOC+11+ZADUR:139:6'

Counter No	Tag	St	MaxOcc	Level	Name
0200	SG6	M	9	2	Discharge Details
0220 12	DTM	C	9	3	Date/time/period

		Standard	Implementation		SCH	ARR	ASC	AAR	TRA	TRS	Business Rules
Tag	Name	St Format	St Format	Usage / Remark							
DTM											
C507	Date/time/period	M	M								
2005	Date or time or period function code qualifier	M an..3	M an..3	136 = Transport means departure date time, actual	M	M	M	M	M	M	
2380	Date or time or period text	C an..35	C an..35	ACTUAL ARRIVAL DATE/TIME		M		M	M		
2379	Date or time or period format code	C an..3	C an..3	203 = CCYYMMDDHHMM							

Remark:

Example:
DTM+136:201709010600:203'

Counter No	Tag	St	MaxOcc	Level	Name
0200	SG6	M	9	2	Call Details
0210 13	LOC	M	1	2	Place/location identification

		Standard	Implementation			SCH	ARR	ASC	AAR	TRA	TRS	Business Rules
Tag	Name	St Format	St Format	Usage / Remark								
LOC												
3227	Location function code qualifier	M an..3	M an..3	153 = Port of call PLACE IDENTIFIER	M	M	M	M	M	M		
C517	Location identification	C	C									
3225	Location identifier	C an..35	C an5	PLACE OF CALL	M		M			M		
1131	Code list identification code	C an..17	C an..17	139 = Port 145 = Airport								
3055	Code list responsible agency code	C an..3	C an..3	6 = UN/ECE (United Nations - Economic Commission for Europe) 3 = IATA (International Air Transport Association)								
3224	Location name	C an..256	N	Not used								
C519	Related location one identification	C	N									
3223	First related location identifier	C an..35	N	Not used								
1131	Code list identification code	C an..17	N	Not used								
3055	Code list responsible agency code	C an..3	N	Not used								
3222	First related location name	C an..70	N	Not used								
C553	Related location two identification	C	N									
3233	Second related location identifier	C an..35	N	Not used								
1131	Code list identification code	C an..17	N	Not used								
3055	Code list responsible agency code	C an..3	N	Not used								
3232	Second related location name	C an..70	N	Not used								
5479	Relation code	C an..3	N	Not used								

Remark:

Example:

LOC+153+ZARIC:139:6'

Counter No	Tag	St	MaxOcc	Level	Name
0200	SG6	M	9	2	Call Details
0220 14	DTM	C	9	3	Date/time/period

		Standard	Implementation		SCH	ARR	ASC	AAR	TRA	TRS	Business Rules
Tag	Name	St Format	St Format	Usage / Remark							
DTM											
C507	Date/time/period	M	M								
2005	Date or time or period function code qualifier	M an..3	M an..3	132 = Transport means arrival date time, estimated	M	M	M	M	M	M	
2380	Date or time or period text	C an..35	C n12	ESTIMATED DATE/TIME OF ARRIVAL	M		M			M	
2379	Date or time or period format code	C an..3	C an..3	203 = CCYYMMDDHHMM							

Remark:

Example:
DTM+132:201709010600:203'

Counter	No	Tag	St	MaxOcc	Level	Name
0280	15	UNT	M	1	0	Message trailer

		Standard	Implementation								
Tag	Name	St Format	St Format	Usage / Remark	SCH	ARR	ASC	AAR	TRA	TRS	Business Rules
UNT											
0074	Number of segments in a message	M n..10	M n..10								
0062	Message reference number	M an..14	M an..14	Must be the same as the UNB							

Remark:
Example:
 UNT+6+1234567890'

Counter	No	Tag	St	MaxOcc	Level	Name
---------	----	-----	----	--------	-------	------

0000 16 **UNZ** M 1 0 Interchange trailer

		Standard	Implementation								Business Rules
Tag	Name	St Format	St Format	Usage / Remark	SCH	ARR	ASC	AAR	TRA	TRS	
UNZ											
0036	Interchange control count	M n..6	M n..6								
0020	Interchange control reference	M an..14	M an..14	Must be the same as the UNB							

Remark:

Example:
UNZ+1+1234567890'

No = Consecutive segment number
 MaxOcc = Maximum occurrence of the segment/group
 Counter = Counter of segment/group within the standard
 St = Status
 EDIFACT: M=Mandatory, C=Conditional
 User specific: M=Mandatory, O=Optional, C=Conditional