



Message Implementation Guideline

COSTCO

based on

COSTCO

Container stuffing/stripping confirmation message

UN D.16B S4

Version: 1
Variant: 0
Issue date: 2017/08/16
Author: SARS EDI

1 Message Structure.....	2
2 Branching Diagram	4
3 Segments	8

Structure / Table of Contents

Counter	No	Tag	St	MaxOcc	Level	Content
	0000	1 UNB	M	1	0	Interchange header
	0010	2 UNH	M	1	0	Message header
	0020	3 BGM	M	1	0	Beginning of message
	0030	4 DTM	M	1	1	DOCUMENT DATE/TIME
	0030	5 DTM	M	1	1	ACTUAL ARRIVAL DATE
	0030	6 DTM	C	1	1	ESTIMATED DATE OF DEPARTURE
	0030	7 DTM	C	9	1	DATE / TIME FULLY UNLOADED / LOADED
	0040	8 FTX	C	9	1	EXCESS INDICATOR
	0040	9 FTX	C	9	1	IMPORT/EXPORT/ TRANSHIPMENT INDICATOR
	0050	SG1	C	9	1	RFF
	0060	10 RFF	M	1	1	DOCUMENT TO BE AMENDED
	0080	SG2	M	1	1	TDT-RFF-RFF-SG3
	0090	11 TDT	M	1	1	Transport information
	0110	12 RFF	C	9	2	MANIFEST TYPE
	0110	13 RFF	C	9	2	PRINCIPAL CARRIER CONVEYANCE NUMBER
	0120	SG3	C	9	2	LOC
	0130	14 LOC	M	1	2	PLACE / PORT OF DISCHARGE
	0150	SG4	M	1	1	MESSAGE SENDER
	0160	15 NAD	M	1	1	MESSAGE SENDER
	0150	SG4	M	9	1	OUTTURN PROVIDER CODE
	0160	16 NAD	M	1	1	OUTTURN PROVIDER CODE
	0200	SG6	M	999	1	EQD-DTM-DTM-SEL
	0210	17 EQD	M	1	1	Equipment details
	0230	18 DTM	C	9	2	DATE/TIME UNPACKED / DECONSOLIDATED
	0230	19 DTM	C	9	2	DATE / TIME FULLY UNLOADED
	0260	20 SEL	M	4	2	Seal number
	0400	SG10	M	999	1	CNI-RFF-RFF-RFF-RFF-RFF-RFF-SG11
	0410	21 CNI	M	1	1	Consignment information
	0420	22 RFF	C	9	2	CARGO CARRIER CODE
	0420	23 RFF	C	9	2	EXTERNAL REFERENCE
	0420	24 RFF	C	9	2	MASTER CARGO CARRIER CODE
	0420	25 RFF	C	9	2	MASTER TRANSPORT DOCUMENT NUMBER
	0420	26 RFF	C	9	2	PARENT TRANSPORT DOCUMENT NUMBER
	0420	27 RFF	C	9	2	LRN EXIT
	0430	SG11	C	999	2	GID-FTX-FTX-FTX-FTX-MEA-MEA-MEA-MEA-PCI-SG13-SG14
	0440	28 GID	M	1	2	Goods item details
	0490	29 FTX	C	9	3	Condition
	0490	30 FTX	C	9	3	Contents Found

Counter = Counter of segment/group within the standard
 No = Consecutive segment number
 MaxOcc = Maximum occurrence of the segment/group

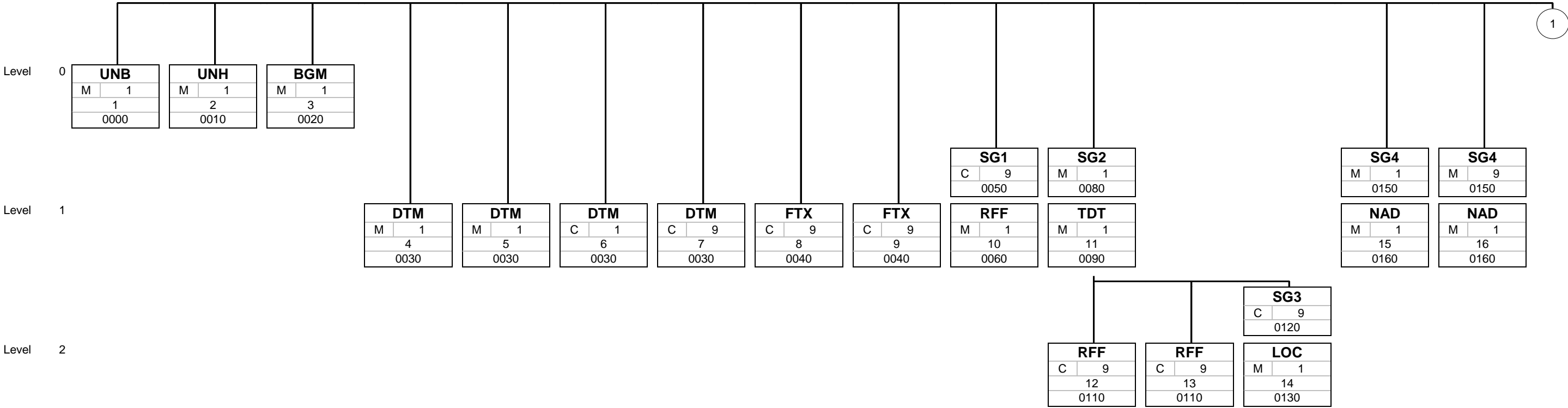
St = Status
 EDIFACT: M=Mandatory, C=Conditional
 User specific: R=Required, O=Optional, D=Dependent,
 A=Advised, N=Not used

Counter	No	Tag	St	MaxOcc	Level	Content
0490	31	FTX	C	9	3	Contents Should be
0490	32	FTX	C	9	3	DESCRIPTION OF GOODS
0500	33	MEA	C	9	3	Gross Weight
0500	34	MEA	C	9	3	Gross Weight Found
0500	35	MEA	C	9	3	Gross Litres
0500	36	MEA	C	9	3	Gross Litres Found
0510	37	PCI	C	9	3	Package identification
0530		SG13	M	999	3	SGP
0540	38	SGP	M	1	3	Split goods placement
0560		SG14	C	99	3	DGS
0570	39	DGS	M	1	3	Dangerous goods
0660	40	CNT	C	1	0	Control total
0670	41	UNT	M	1	0	Message trailer
0000	42	UNZ	M	1	0	Interchange trailer

Counter = Counter of segment/group within the standard
 No = Consecutive segment number
 MaxOcc = Maximum occurrence of the segment/group

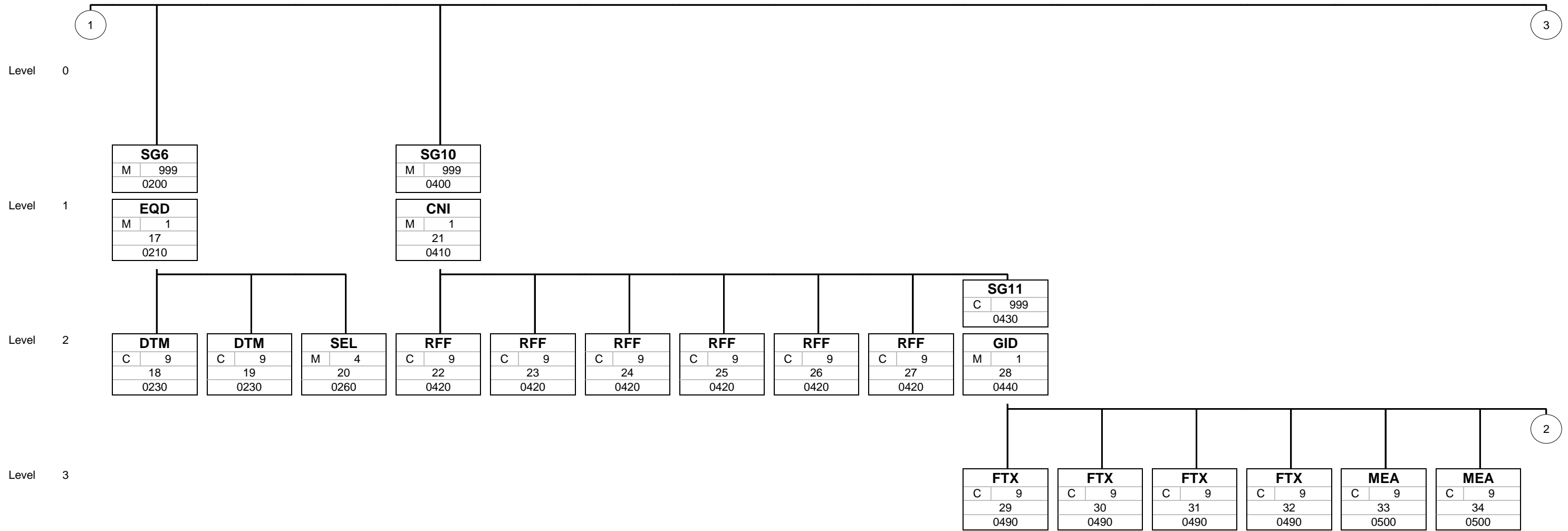
St = Status
 EDIFACT: M=Mandatory, C=Conditional
 User specific: R=Required, O=Optional, D=Dependent,
 A=Advised, N=Not used

Branching Diagram of Used Segments/Groups



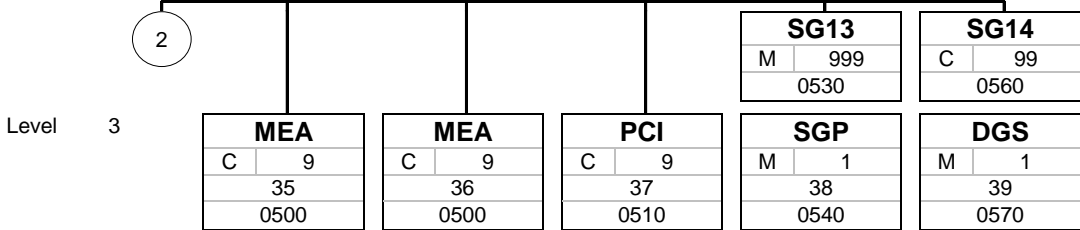
Tag
St MaxOcc
No
Counter

Tag = Segment/Group Tag
 St = Status (M=Mandatory, C=Conditional, R=Required, O=Optional, A=Advised, D=Dependent)
 MaxOcc = Maximum occurrence of the segment/group
 No = Consecutive segment number
 Counter = Counter of segment/group within the standard



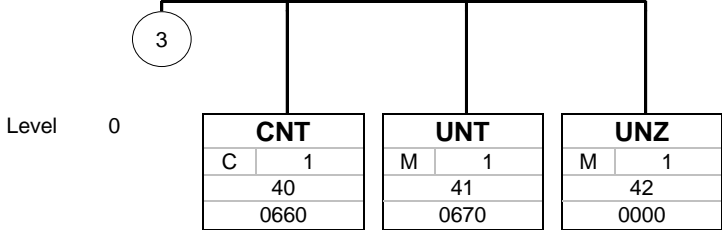
Tag
St MaxOcc
No
Counter

Tag = Segment/Group Tag
 St = Status (M=Mandatory, C=Conditional, R=Required, O=Optional, A=Advised, D=Dependent)
 MaxOcc = Maximum occurrence of the segment/group
 No = Consecutive segment number
 Counter = Counter of segment/group within the standard



Tag
St MaxOcc
No
Counter

Tag = Segment/Group Tag
 St = Status (M=Mandatory, C=Conditional, R=Required, O=Optional, A=Advised, D=Dependent)
 MaxOcc = Maximum occurrence of the segment/group
 No = Consecutive segment number
 Counter = Counter of segment/group within the standard



Tag
St MaxOcc
No
Counter

Tag = Segment/Group Tag
 St = Status (M=Mandatory, C=Conditional, R=Required, O=Optional, A=Advised, D=Dependent)
 MaxOcc = Maximum occurrence of the segment/group
 No = Consecutive segment number
 Counter = Counter of segment/group within the standard

Segments

Counter No Tag St MaxOcc Level Name

0000 1 UNB M 1 0 Interchange header

		Standard	Implementation									Business Rules
Tag	Name	St Format	St Format	Usage / Remark	DOR	BBB	VOR	AOR	EOR	ALD		
UNB												
S001	Syntax identifier	M	M									
0001	Syntax identifier	M a4	M a4	UNOB = UN/ECE level B	M	M	M	M	M	M		
0002	Syntax version number	M an1	M an1	4 = Version 4	M	M	M	M	M	M		
0080	Service code list directory version number	C an..6	N	Not used								
0133	Character encoding, coded	C an..3	N	Not used								
0076	Syntax release number	C an2	N	Not used								
S002	Interchange sender	M	M									
0004	Interchange sender identification	M an..35	M an..35	SARS assigned EDI Profile Code including dual code (if applicable)	M	M	M	M	M	M		
0007	Identification code qualifier	C an..4	N	Not used								
0008	Interchange sender internal identification	C an..35	C an..35	Authentication code provided by SARS for EDI profile	M	M	M	M	M	M		
0042	Interchange sender internal sub-identification	C an..35	C an..35									
S003	Interchange recipient	M	M									
0010	Interchange recipient identification	M an..35	M an..35	SARSCAR = RCG Production System SARSCART = RCG Test System	M	M	M	M	M	M		
0007	Identification code qualifier	C an..4	N	Not used								
0014	Interchange recipient internal identification	C an..35	N	Not used								
0046	Interchange recipient internal sub-identification	C an..35	N	Not used								
S004	Date and time of preparation	M	M									
0017	Date	M n8	M n8		M	M	M	M	M	M		
0019	Time	M n4	M n4		M	M	M	M	M	M		
0020	Interchange control reference	M an..14	M an..14		M	M	M	M	M	M		
S005	Recipient reference/password details	C	C									
0022	Recipient reference/password	M an..14	N	Not used								
0025	Recipient reference/password qualifier	C an2	N	Not used								
0026	Application reference	C an..14	C an..14									
0029	Processing priority code	C a1	C a1									
0031	Acknowledgement request	C n1	C n1	1 = Acknowledgement requested	O	O	O	O	O	O		
0032	Interchange agreement identifier	C an..35	C an..35	Required for X.400	C	C	C	C	C	C		
0035	Test indicator	C n1	C n1	Required for Test 1 = Interchange is a test	C	C	C	C	C	C		

Remark:

Example:

UNB+UNOB:4+12345678ABC::ABCDEFGHIJKLMNQP:SPCAS2+SARSCAR+20170724:1341+1234567890++COSTCO+A+1+X400
Mailbox+1'

No = Consecutive segment number

MaxOcc = Maximum occurrence of the segment/group

Counter = Counter of segment/group within the standard

St = Status

EDIFACT: M=Mandatory, C=Conditional

User specific: M=Mandatory, O=Optional, C=Conditional

Counter No	Tag	St	MaxOcc	Level	Name	
0010	2	UNH	M	1	0	Message header

		Standard	Implementation								Business Rules
Tag	Name	St Format	St Format	Usage / Remark	DOR	BBB	VOR	AOR	EOR	ALD	
UNH											
0062	Message reference number	M an..14	M an..14		M	M	M	M	M	M	
S009	Message identifier	M	M								
0065	Message type	M an..6	M an..6	COSTCO = Container stuffing/stripping confirmation message	M	M	M	M	M	M	
0052	Message version number	M an..3	M an..3	D = Draft version/UN/EDIFACT Directory	M	M	M	M	M	M	
0054	Message release number	M an..3	M an..3	16B = Release 2016 - B	M	M	M	M	M	M	
0051	Controlling agency, coded	M an..3	M an..3	UN = UN/CEFACT	M	M	M	M	M	M	
0057	Association assigned code	C an..6	C an..6	RCG001 = SARS RCG Version 1	M	M	M	M	M	M	
0110	Code list directory version number	C an..6	N	Not used							
0113	Message type sub-function identification	C an..6	N	Not used							
0068	Common access reference	C an..35	N	Not used							
S010	Status of the transfer	C	N	Not used							
0070	Sequence of transfers	M n..2	N	Not used							
0073	First and last transfer	C a1	N	Not used							
S016	Message subset identification	C	N	Not used							
0115	Message subset identification	M an..14	N	Not used							
0116	Message subset version number	C an..3	N	Not used							
0118	Message subset release number	C an..3	N	Not used							
0051	Controlling agency, coded	C an..3	N	Not used							
S017	Message implementation guideline identification	C	N	Not used							
0121	Message implementation guideline identification	M an..14	N	Not used							
0122	Message implementation guideline version number	C an..3	N	Not used							
0124	Message implementation guideline release number	C an..3	N	Not used							
0051	Controlling agency, coded	C an..3	N	Not used							
S018	Scenario identification	C	N	Not used							
0127	Scenario identification	M an..14	N	Not used							
0128	Scenario version number	C an..3	N	Not used							
0130	Scenario release number	C an..3	N	Not used							
0051	Controlling agency, coded	C an..3	N	Not used							

Remark:

Example:

UNH+1212121212+COSTCO:D:16B:UN:RCG001'

No = Consecutive segment number
 MaxOcc = Maximum occurrence of the segment/group
 Counter = Counter of segment/group within the standard

St = Status
 EDIFACT: M=Mandatory, C=Conditional
 User specific: M=Mandatory, O=Optional, C=Conditional

Counter No	Tag	St	MaxOcc	Level	Name	
0020	3	BGM	M	1	0	Beginning of message

		Standard	Implementation							Business Rules	
Tag	Name	St Format	St Format	Usage / Remark	DOR	BBB	VOR	AOR	EOR	ALD	
BGM											
C002	Document/message name	C	C								
1001	Document name code	C an..3	M an..3	788 = Container manifest (unit packing list)	M	M	M	M	M	M	
1131	Code list identification code	C an..17	N	Not used							
3055	Code list responsible agency code	C an..3	N	Not used							
1000	Document name	C an..35	C an..3	DOCUMENT TYPE DOR = Depot Cargo Outturn Report BBB = Bulk/Break Bulk/Cargo Outturn Report VOR = Vessel Outturn Report AOR = Air Cargo Outturn Report EOR = Air Excess Outturn Report ALD = Air Load/Discharge	M	M	M	M	M	M	DOR to be submitted by licensee of container depot on completion of container pack/unpack. One COSTCO DOR per container. BBB to be submitted by Break Bulk/Bulk Terminal Operator at prescribed intervals for cargo load/discharge. VOR to be submitted by licensee of container depot on completion of container pack/unpack to report unmanifested excess cargo. One COSTCO VOR per container. AOR to be submitted by licensee of air cargo depot on completion of cargo pack/unpack. EOR to be submitted by licensee of container depot on completion of cargo pack/unpack. ALD to be submitted by air cargo terminal operators on completion of cargo loaded/un-loaded from aircraft.
C106	Document/message identification	C	C								
1004	Document identifier	C an..70	M an..35	DOCUMENT NUMBER A unique reference number assigned to the electronic document.	M	M	M	M	M	M	
1056	Version identifier	C an..9	N	Not used							
1060	Revision identifier	C an..6	N	Not used							
1225	Message function code	C an..3	C an..3	MESSAGE FUNCTION 4 = Change [If a document is amended, the reference number of the original message must be supplied within DOCUMENT TO BE AMENDED / CANCELLED] 1 = Cancellation [If a document is cancelled, the reference number of the original message must be supplied within DOCUMENT TO BE AMENDED / CANCELLED] 9 = Original 4 = Change 1 = Cancellation	M	M	M	M	M	M	
4343	Response type code	C an..3	N	Not used							
1373	Document status code	C an..3	N	Not used							
3453	Language name code	C an..3	N	Not used							

Remark:

Example:

BGM+788:::DOR+123456789+9'

No = Consecutive segment number
 MaxOcc = Maximum occurrence of the segment/group
 Counter = Counter of segment/group within the standard
 St = Status
 EDIFACT: M=Mandatory, C=Conditional
 User specific: M=Mandatory, O=Optional, C=Conditional

Counter No	Tag	St	MaxOcc	Level	Name
------------	-----	----	--------	-------	------

0030 4 **DTM** M 1 1 DOCUMENT DATE/TIME

		Standard	Implementation		DOR	BBB	VOR	AOR	EOR	ALD	Business Rules
Tag	Name	St Format	St Format	Usage / Remark							
DTM											
C507	Date/time/period	M	M								
2005	Date or time or period function code qualifier	M an..3	M an..3	137 = Document issue date time							
2380	Date or time or period text	C an..35	C an..35	DOCUMENT DATE/TIME	M	M	M	M	M	M	
2379	Date or time or period format code	C an..3	C an..3	203 = CCYYMMDDHHMM							

Remark:

Example:
DTM+137:201708231454:203'

No = Consecutive segment number
 MaxOcc = Maximum occurrence of the segment/group
 Counter = Counter of segment/group within the standard
 St = Status
 EDIFACT: M=Mandatory, C=Conditional
 User specific: M=Mandatory, O=Optional, C=Conditional

Counter No	Tag	St	MaxOcc	Level	Name
------------	-----	----	--------	-------	------

0030 5 **DTM** M 1 1 ACTUAL ARRIVAL DATE

		Standard	Implementation		DOR	BBB	VOR	AOR	EOR	ALD	Business Rules
Tag	Name	St Format	St Format	Usage / Remark							
DTM											
C507	Date/time/period	M	M								
2005	Date or time or period function code qualifier	M an..3	M an..3	132 = Transport means arrival date time, estimated							
2380	Date or time or period text	C an..35	C n..12	ACTUAL ARRIVAL DATE <i>Mandatory if inbound</i>	C	C	C	C	C	C	
2379	Date or time or period format code	C an..3	C an..3	203 = CCYYMMDDHHMM							

Remark:

Example:
DTM+132:201708151234:203'

No = Consecutive segment number
 MaxOcc = Maximum occurrence of the segment/group
 Counter = Counter of segment/group within the standard
 St = Status
 EDIFACT: M=Mandatory, C=Conditional
 User specific: M=Mandatory, O=Optional, C=Conditional

Counter No	Tag	St	MaxOcc	Level	Name	
0030	6	DTM	C	1	1	ESTIMATED DATE OF DEPARTURE

		Standard	Implementation		DOR	BBB	VOR	AOR	EOR	ALD	Business Rules
Tag	Name	St Format	St Format	Usage / Remark							
DTM											
C507	Date/time/period	M	M								
2005	Date or time or period function code qualifier	M an..3	M an..3	133 = Transport means departure date/time, estimated							
2380	Date or time or period text	C an..35	C n..12	ESTIMATED DATE OF DEPARTURE <i>If outbound then Mandatory</i>	C	C	C	C	C	C	
2379	Date or time or period format code	C an..3	C an..3	203 = CCYYMMDDHHMM							

Remark:
Example:
 DTM+132:201708151234:203'

Counter No	Tag	St	MaxOcc	Level	Name	
0040	8	FTX	C	9	1	EXCESS INDICATOR

		Standard	Implementation		DOR	BBB	VOR	AOR	EOR	ALD	Business Rules
Tag	Name	St Format	St Format	Usage / Remark							
FTX											
4451	Text subject code qualifier	M an..3	M an..3	ABO = Discrepancy information							
4453	Free text function code	C an..3	N	Not used							
C107	Text reference	C	C								
4441	Free text description code	M an..17	M an..3	EXCESS INDICATOR 1 = Excess 2 = No Excess			M		M		
1131	Code list identification code	C an..17	N	Not used							
3055	Code list responsible agency code	C an..3	N	Not used							
C108	Text literal	C	N								
4440	Free text	M an..512	N	Not used							
4440	Free text	C an..512	N	Not used							
4440	Free text	C an..512	N	Not used							
4440	Free text	C an..512	N	Not used							
4440	Free text	C an..512	N	Not used							
3453	Language name code	C an..3	N	Not used							
4447	Free text format code	C an..3	N	Not used							

Remark:

Example:

FTX+ABO++1'

Counter	No	Tag	St	MaxOcc	Level	Name
0040	9	FTX	C	9	1	IMPORT/EXPORT/ TRANSHIPMENT INDICATOR

		Standard	Implementation		DOR	BBB	VOR	AOR	EOR	ALD	Business Rules
Tag	Name	St Format	St Format	Usage / Remark							
FTX											
4451	Text subject code qualifier	M an..3	M an..3	ADI = Field of application							
4453	Free text function code	C an..3	N	Not used							
C107	Text reference	C	C								
4441	Free text description code	M an..17	M an..3	IMPORT/EXPORT/ TRANSHIPMENT INDICATOR 830 = Export 929 = Import 950 = Transit	M	M	M	M	M	M	Transit is a customs procedure that allows goods imported on board foreign-going vessels, aircraft, a cross-border railway carriage and trucks to be transported through the Republic from the place in the Republic where the goods were off-loaded from the vessel, aircraft or railway carriage or where it entered the Republic (by road) to a place of exit from where the goods are to be exported from the Republic. Transshipment is a customs procedure that allows imported goods to be transferred at a customs seaport or airport from the foreign-going vessel or aircraft on which those goods were imported to another foreign-going vessel or aircraft at that seaport or airport on which those goods are to be exported from the Republic.
1131	Code list identification code	C an..17	N	Not used							
3055	Code list responsible agency code	C an..3	N	Not used							
C108	Text literal	C	N								
4440	Free text	M an..512	N	Not used							
4440	Free text	C an..512	N	Not used							
4440	Free text	C an..512	N	Not used							
4440	Free text	C an..512	N	Not used							
4440	Free text	C an..512	N	Not used							
3453	Language name code	C an..3	N	Not used							
4447	Free text format code	C an..3	N	Not used							

Remark:

Example:

FTX+ADI++1'

Counter No	Tag	St	MaxOcc	Level	Name
0050	SG1	C	9	1	RFF
0060 10	RFF	M	1	1	DOCUMENT TO BE AMENDED

		Standard	Implementation		DOR	BBB	VOR	AOR	EOR	ALD	Business Rules
Tag	Name	St Format	St Format	Usage / Remark							
RFF											
C506	Reference	M	M								
1153	Reference code qualifier	M an..3	M an..3	ACW = Reference number to previous message							
1154	Reference identifier	C an..70	C an..35	DOCUMENT TO BE AMENDED <i>Mandatory should this message be an amendment to a previous message or a cancellation of a previous message.</i>	C	C	C	C	C	C	
1156	Document line identifier	C an..6	N	Not used							
1056	Version identifier	C an..9	N	Not used							
1060	Revision identifier	C an..6	N	Not used							

Remark:

Example:
RFF+ACW:123456789A'

Counter No	Tag	St	MaxOcc	Level	Name
0080	SG2	M	1	1	TDT-RFF-SG3
0090 11	TDT	M	1	1	Transport information

Standard		Implementation									Business Rules
Tag	Name	St Format	St Format	Usage / Remark	DOR	BBB	VOR	AOR	EOR	ALD	
TDT											
8051	Transport stage code qualifier	M an..3	M an..3	20 = Main-carriage transport	M	M	M	M	M	M	
8028	Means of transport journey identifier	C an..17	M an..17	CONVEYANCE NUMBER The ID of the sender of the EDI message.	M	M	M	M	M	M	Voyage number, flight number, trip number etc. as assigned by the principal carrier e.g. shipping line, airline etc operating the means of transport
C220	Mode of transport	C	C								
8067	Transport mode name code	C an..3	M an..3	TRANSPORT CODE 1 = Maritime transport 2 = Rail transport 3 = Road transport 4 = Air transport	M	M	M	M	M	M	Applicable numeric main carriage transport code
8066	Transport mode name	C an..17	N	Not used							
C001	Transport means	C	N	Not used							
8179	Transport means description code	C an..8	N	Not used							
1131	Code list identification code	C an..17	N	Not used							
3055	Code list responsible agency code	C an..3	N	Not used							
8178	Transport means description	C an..17	N	Not used							
C040	Carrier	C	C								
3127	Carrier identifier	C an..17	M an..17	CARRIER CODE SARS Code List 9 [Applicable numeric main carriage transport code (UN Recommendation 19). Also refer to the SARS Code List 9.]	M	M	M	M	M	M	Operator code of the carrier operating the means of transport.
1131	Code list identification code	C an..17	C an..17	172 = Carrier code							
3055	Code list responsible agency code	C an..3	C an..3	3 = IATA (International Air Transport Association) 20 = BIC (Bureau International des Containeurs) 166 = US, National Motor Freight Classification Association							
3126	Carrier name	C an..35	N	Not used							
8101	Transit direction indicator code	C an..3	N	Not used							
C401	Excess transportation information	C	N	Not used							
8457	Excess transportation reason code	M an..3	N	Not used							
8459	Excess transportation responsibility code	M an..3	N	Not used							
7130	Customer shipment authorisation identifier	C an..17	N	Not used							
C222	Transport identification	C	C								
8213	Transport means identification name identifier	C an..35	C an..9	TRANSPORT ID	M	M	M	O	O		Radio Call Sign/Registration Number of aircraft
1131	Code list identification code	C an..17	C an..17	103 = Call sign directory 146 = Means of transport identification							
3055	Code list responsible agency code	C an..3	N	Not used							
8212	Transport means identification name	C an..70	N	Not used							
8453	Transport means nationality code	C an..3	N	Not used							
8281	Transport means ownership indicator code	C an..3	N	Not used							
C003	Power type	C	N	Not used							
7041	Power type code	C an..3	N	Not used							
1131	Code list identification code	C an..17	N	Not used							
3055	Code list responsible agency code	C an..3	N	Not used							

No = Consecutive segment number
 MaxOcc = Maximum occurrence of the segment/group
 Counter = Counter of segment/group within the standard

St = Status
 EDIFACT: M=Mandatory, C=Conditional
 User specific: M=Mandatory, O=Optional, C=Conditional

		Standard	Implementation									
Tag	Name	St Format	St Format	Usage / Remark	DOR	BBB	VOR	AOR	EOR	ALD	Business Rules	
7040	Power type description code	C an..17	N	Not used								

Remark:

Example:
TDT+20+ABCD1234567890+1++ABCD:172:20+++ATYU13:103'

No = Consecutive segment number
 MaxOcc = Maximum occurrence of the segment/group
 Counter = Counter of segment/group within the standard
 St = Status
 EDIFACT: M=Mandatory, C=Conditional
 User specific: M=Mandatory, O=Optional, C=Conditional

Counter No	Tag	St	MaxOcc	Level	Name
0080	SG2	M	1	1	TDT-RFF-SG3
0110 12	RFF	C	9	2	MANIFEST TYPE

		Standard	Implementation		DOR	BBB	VOR	AOR	EOR	ALD	Business Rules
Tag	Name	St Format	St Format	Usage / Remark							
RFF											
C506	Reference	M	M								
1153	Reference code qualifier	M an..3	M an..3	AFB = Cargo manifest number							
1154	Reference identifier	C an..70	C an..70	MANIFEST TYPE 22 = Export 23 = Import 24 = Transhipment 28 = Transit ZZZ = Mutually defined - Specify at line level 57 = Freight Remaining on Board		M		M		M	
1156	Document line identifier	C an..6	N	Not used							
1056	Version identifier	C an..9	N	Not used							
1060	Revision identifier	C an..6	N	Not used							

Remark:

Example:

RFF+AFB: 22 '

Counter No	Tag	St	MaxOcc	Level	Name
0080	SG2	M	1	1	TDT-RFF-SG3
0110 13	RFF	C	9	2	PRINCIPAL CARRIER CONVEYANCE NUMBER

		Standard	Implementation		DOR	BBB	VOR	AOR	EOR	ALD	Business Rules
Tag	Name	St Format	St Format	Usage / Remark							
RFF											
C506	Reference	M	M								
1153	Reference code qualifier	M an..3	M an..3	ACL = Principal reference number							
1154	Reference identifier	C an..70	M an..70	PRINCIPAL CARRIER CONVEYANCE NUMBER	M	M	M	M	M	M	The voyage or flight number assigned by the Carrier who owns, operates or leases the means of transport on which the goods are transported.
1156	Document line identifier	C an..6	N	Not used							
1056	Version identifier	C an..9	N	Not used							
1060	Revision identifier	C an..6	N	Not used							

Remark:

Example:
RFF+ACL:1233322114556'

Counter No	Tag	St	MaxOcc	Level	Name
0120	SG3	C	9	2	LOC
0130 14	LOC	M	1	2	PLACE / PORT OF DISCHARGE

		Standard	Implementation		DOR	BBB	VOR	AOR	EOR	ALD	Business Rules
Tag	Name	St Format	St Format	Usage / Remark							
LOC											
3227	Location function code qualifier	M an..3	M an..3	11 = Place of discharge							
C517	Location identification	C	C								
3225	Location identifier	C an..35	C an..5	PLACE/PORT OF DISCHARGE <i>If inbound, then Mandatory Import RSA port</i> Registration number/ID of the means of transport.	C	C	C	C	C	C	
1131	Code list identification code	C an..17	C an..17	139 = Port							
3055	Code list responsible agency code	C an..3	C an..3	6 = UN/ECE (United Nations - Economic Commission for Europe)							
3224	Location name	C an..256	N	Not used							
C519	Related location one identification	C	C								
3223	First related location identifier	C an..35	C an..25	TERMINAL/BERTH OF DISCHARGE/LOAD		M				M	
1131	Code list identification code	C an..17	N	Not used							
3055	Code list responsible agency code	C an..3	C an..3	ZZZ = South African Revenue Service							
3222	First related location name	C an..70	N	Not used							
C553	Related location two identification	C	N								
3233	Second related location identifier	C an..35	N	Not used							
1131	Code list identification code	C an..17	N	Not used							
3055	Code list responsible agency code	C an..3	N	Not used							
3232	Second related location name	C an..70	N	Not used							
5479	Relation code	C an..3	N	Not used							

Remark:

Example:

LOC+11+ZADUR:139:6+07:::ZZZ'

Counter No	Tag	St	MaxOcc	Level	Name
0150	SG4	M	1	1	MESSAGE SENDER
0160 15	NAD	M	1	1	MESSAGE SENDER

		Standard	Implementation		DOR	BBB	VOR	AOR	EOR	ALD	Business Rules
Tag	Name	St Format	St Format	Usage / Remark							
NAD											
3035	Party function code qualifier	M an..3	M an..3	MS = Document/message issuer/sender							
C082	Party identification details	C	C								
3039	Party identifier	M an..35	M an..35	MESSAGE SENDER Actual arrival date of the means of transport. The ID of the sender of the EDI message. Must match sender id in UNB.	M	M	M	M	M	M	
1131	Code list identification code	C an..17	C an..17								
3055	Code list responsible agency code	C an..3	C an..3	ZZZ = South African Revenue Service							
C058	Name and address	C	N								
3124	Name and address description	M an..35	N	Not used							
3124	Name and address description	C an..35	N	Not used							
3124	Name and address description	C an..35	N	Not used							
3124	Name and address description	C an..35	N	Not used							
3124	Name and address description	C an..35	N	Not used							
C080	Party name	C	N								
3036	Party name	M an..70	N	Not used							
3036	Party name	C an..70	N	Not used							
3036	Party name	C an..70	N	Not used							
3036	Party name	C an..70	N	Not used							
3036	Party name	C an..70	N	Not used							
3045	Party name format code	C an..3	N	Not used							
C059	Street	C	N								
3042	Street and number or post office box identifier	M an..35	N	Not used							
3042	Street and number or post office box identifier	C an..35	N	Not used							
3042	Street and number or post office box identifier	C an..35	N	Not used							
3042	Street and number or post office box identifier	C an..35	N	Not used							
3164	City name	C an..35	N	Not used							
C819	Country subdivision details	C	N								
3229	Country subdivision identifier	C an..9	N	Not used							
1131	Code list identification code	C an..17	N	Not used							
3055	Code list responsible agency code	C an..3	N	Not used							
3228	Country subdivision name	C an..70	N	Not used							
3251	Postal identification code	C an..17	N	Not used							
3207	Country identifier	C an..3	N	Not used							

Remark:

Example:

NAD+MS+12345678ABC::ZZZ'

Counter No	Tag	St	MaxOcc	Level	Name
0150	SG4	M	9	1	OUTTURN PROVIDER CODE
0160 16	NAD	M	1	1	OUTTURN PROVIDER CODE

		Standard	Implementation		DOR	BBB	VOR	AOR	EOR	ALD	Business Rules
Tag	Name	St Format	St Format	Usage / Remark							
NAD											
3035	Party function code qualifier	M an..3	M an..3	RL = Reporting carrier (Customs)							
C082	Party identification details	C	C								
3039	Party identifier	M an..35	M an..35	OUTTURN PROVIDER CODE SARS Code List 2 [For maritime Bulk and Break Bulk cargo the terminal of discharge must be specified.] The ID of the sender of the EDI message. Must match sender id in UNB.	M	M	M	M	M	M	
1131	Code list identification code	C an..17	C an..17								
3055	Code list responsible agency code	C an..3	C an..3	ZZZ = South African Revenue Service							
C058	Name and address	C	N								
3124	Name and address description	M an..35	N	Not used							
3124	Name and address description	C an..35	N	Not used							
3124	Name and address description	C an..35	N	Not used							
3124	Name and address description	C an..35	N	Not used							
3124	Name and address description	C an..35	N	Not used							
C080	Party name	C	N								
3036	Party name	M an..70	N	Not used							
3036	Party name	C an..70	N	Not used							
3036	Party name	C an..70	N	Not used							
3036	Party name	C an..70	N	Not used							
3036	Party name	C an..70	N	Not used							
3045	Party name format code	C an..3	N	Not used							
C059	Street	C	N								
3042	Street and number or post office box identifier	M an..35	N	Not used							
3042	Street and number or post office box identifier	C an..35	N	Not used							
3042	Street and number or post office box identifier	C an..35	N	Not used							
3042	Street and number or post office box identifier	C an..35	N	Not used							
3164	City name	C an..35	N	Not used							
C819	Country subdivision details	C	N								
3229	Country subdivision identifier	C an..9	N	Not used							
1131	Code list identification code	C an..17	N	Not used							
3055	Code list responsible agency code	C an..3	N	Not used							
3228	Country subdivision name	C an..70	N	Not used							
3251	Postal identification code	C an..17	N	Not used							
3207	Country identifier	C an..3	N	Not used							

Remark:

Example:

NAD+RL+12345678ABC::ZZZ'

No = Consecutive segment number
 MaxOcc = Maximum occurrence of the segment/group
 Counter = Counter of segment/group within the standard
 St = Status
 EDIFACT: M=Mandatory, C=Conditional
 User specific: M=Mandatory, O=Optional, C=Conditional

Counter No	Tag	St	MaxOcc	Level	Name
0200	SG6	M	999	1	EQD-DTM-SEL
0210 17	EQD	M	1	1	Equipment details

		Standard	Implementation		DOR	BBB	VOR	AOR	EOR	ALD	Business Rules
Tag	Name	St Format	St Format	Usage / Remark							
EQD											
8053	Equipment type code qualifier	M an..3	M an..3	EQUIPMENT TYPE CN = Container BB = Bulk/Break-bulk UL = ULD (Unit load device) BB = Un-containerized cargo (breakbulk) CN = Container UL = ULD (Unit load device)	M	M	M	M	M	M	
C237	Equipment identification	C	C								
8260	Equipment identifier	C an..17	C an..17	CONTAINER NUMBER/WAGON NUMBER/Transport Equipment Number <i>For containerized goods, the container number, seal number and status are required</i>	M		C	O	O	O	
1131	Code list identification code	C an..17	N	Not used							
3055	Code list responsible agency code	C an..3	N	Not used							
3207	Country identifier	C an..3	N	Not used							
C224	Equipment size and type	C	C								
8155	Equipment size and type description code	C an..10	C an..10	CONTAINER SIZE/TYPE First 2 characters is the size and next 2 characters is the type	M						
1131	Code list identification code	C an..17	C an..17	102 = Size and type							
3055	Code list responsible agency code	C an..3	C an..3	5 = ISO (International Organization for Standardization)							
8154	Equipment size and type description	C an..35	N	Not used							
8077	Equipment supplier code	C an..3	N	Not used							
8249	Equipment status code	C an..3	C an..3	CONTAINER STATUS/LANDED PURPOSE 2 = Export 3 = Import 6 = Transshipment 2 = Export 3 = Import 6 = Transshipment	M						
8169	Full or empty indicator code	C an..3	C an..3	SERVICE TYPE 4 = Empty [Used to indicate the status of the container.] 4 = Empty 5 = Full (FCL Groupage) 7 = Full, mixed consignment (LCL) 8 = Full, single consignment (FCL) 4 = Empty 5 = Full 7 = Full, mixed consignment 8 = Full, single consignment	M						
4233	Marking instructions code	C an..3	N	Not used							

Remark:

Example:

EQD+CN+NONU1234567+16G0:102:5++3+4'

No = Consecutive segment number
MaxOcc = Maximum occurrence of the segment/group
Counter = Counter of segment/group within the standard

St = Status
EDIFACT: M=Mandatory, C=Conditional
User specific: M=Mandatory, O=Optional, C=Conditional

Counter No	Tag	St	MaxOcc	Level	Name
0200	SG6	M	999	1	EQD-DTM-SEL
0230 18	DTM	C	9	2	DATE/TIME UNPACKED / DECONSOLIDATED

		Standard	Implementation		DOR	BBB	VOR	AOR	EOR	ALD	Business Rules
Tag	Name	St Format	St Format	Usage / Remark							
DTM											
C507	Date/time/period	M	M								
2005	Date or time or period function code qualifier	M an..3	M an..3	164 = Processing end date/time							
2380	Date or time or period text	C an..35	C n..12	DATE/TIME UNPACKED/DECONSOLIDATED/DISCHARGED/LOADED The date when the container is unpacked or air cargo is deconsolidated.	M		M	M	M		The date when the container is packed/unpacked or air cargo is consolidated/deconsolidated.
2379	Date or time or period format code	C an..3	C an..3	203 = CCYYMMDDHHMM							

Remark:

Example:

DTM+164:201708151530:203'

Counter No	Tag	St	MaxOcc	Level	Name
0200	SG6	M	999	1	EQD-DTM-SEL
0230 19	DTM	C	9	2	DATE / TIME FULLY UNLOADED

		Standard	Implementation		DOR	BBB	VOR	AOR	EOR	ALD	Business Rules
Tag	Name	St Format	St Format	Usage / Remark							
DTM											
C507	Date/time/period	M	M								
2005	Date or time or period function code qualifier	M an..3	M an..3	420 = Unloaded, date and time							
2380	Date or time or period text	C an..35	C an..35	DATE / TIME FULLY UNLOADED			C				
2379	Date or time or period format code	C an..3	C an..3	203 = CCYYMMDDHHMM							

Remark:

Example:
DTM+420:201708151245:203'

Counter No	Tag	St	MaxOcc	Level	Name
0200	SG6	M	999	1	EQD-DTM-SEL
0260 20	SEL	M	4	2	Seal number

Standard		Implementation									Business Rules
Tag	Name	St Format	St Format	Usage / Remark	DOR	BBB	VOR	AOR	EOR	ALD	
SEL											
9308	Transport unit seal identifier	C an..35	C an..35	SEAL NUMBER-1 <i>For containerized goods, the container number, seal number and status are required</i>	M		C		O		Should no Seal Number be available, "NO SEAL NO" must be specified within this field. This segment may occur a maximum of four times.
C215	Seal issuer	C	C								
9303	Sealing party name code	C an..3	C an..3	SEALING PARTY-1 SH = Shipper [Seal as assigned by the Shipping Line.] TO = Terminal operator [On imports, the Seal Number assigned by the Terminal Operator should the Shipper's Seal be damaged.] AA = Consolidator [There will always be two occurrences with the AA qualifier. The first occurrence must always contain the Seal Number found on arrival at the Depot. The second occurrence must contain the Seal Number on unpacking the container. Both these Seal Numbers are mandatory.] CA = Carrier CU = Customs SH = Shipper TO = Terminal operator AA = Consolidator AB = Unknown AA = Consolidator AB = Unknown CA = Carrier CU = Customs SH = Shipper TO = Terminal operator	O				O		
1131	Code list identification code	C an..17	N	Not used							
3055	Code list responsible agency code	C an..3	N	Not used							
9302	Sealing party name	C an..35	N	Not used							
4517	Seal condition code	C an..3	C an..3	SEAL STATUS <i>For containerized goods, the container number, seal number and status are required</i> 1 = In right condition 2 = Damaged	M		C		O		
C208	Identity number range	C	N								
7402	Object identifier	M an..35	N	Not used							
7402	Object identifier	C an..35	N	Not used							
4525	Seal type code	C an..3	N	Not used							

Remark:

Example:

SEL+123456654321+SH+1'

No = Consecutive segment number
 MaxOcc = Maximum occurrence of the segment/group
 Counter = Counter of segment/group within the standard
 St = Status
 EDIFACT: M=Mandatory, C=Conditional
 User specific: M=Mandatory, O=Optional, C=Conditional

Counter No	Tag	St	MaxOcc	Level	Name
0400	SG10	M	999	1	CNI-RFF-SG11
0410 21	CNI	M	1	1	Consignment information

		Standard	Implementation		DOR	BBB	VOR	AOR	EOR	ALD	Business Rules
Tag	Name	St Format	St Format	Usage / Remark							
CNI											
1490	Consolidation item number	C n..5	C n..5	LINE NUMBER / WAYBILL LINE NUMBER	O	O		O		O	Sequential number assigned to each Waybill
C503	Document/message details	C	C								
1004	Document identifier	C an..70	C an..35	TRANSPORT DOCUMENT NUMBER In the case of FCL and LCL cargo information submitted by the Carrier, this field will contain the Master Bill Of Lading number. In the case of FCL Groupage cargo information submitted by a Broker this field will contain the House Bill Of Lading Number. For Air, in the case of a Master Air Waybill in respect of straight cargo, the Master Air Waybill Number will also be reflected here. For air, in the case of consolidated cargo, the House Air Waybill number will be reflected here. For Air, in respect of a sub-consolidations the House Air Waybill Number issued by the sub-consolidator must be reflected here. For Rail, supply the Rail Consignment Note Number.	M	M		M		M	
1373	Document status code	C an..3	N	Not used							
1366	Document source description	C an..70	N	Not used							
3453	Language name code	C an..3	N	Not used							
1056	Version identifier	C an..9	N	Not used							
1060	Revision identifier	C an..6	N	Not used							
1312	Consignment load sequence identifier	C n..4	N	Not used							

Remark:

Example:

CNI+1+987654321ASDFGHJKL'

No = Consecutive segment number
 MaxOcc = Maximum occurrence of the segment/group
 Counter = Counter of segment/group within the standard
 St = Status
 EDIFACT: M=Mandatory, C=Conditional
 User specific: M=Mandatory, O=Optional, C=Conditional

Counter No	Tag	St	MaxOcc	Level	Name
0400	SG10	M	999	1	CNI-RFF-SG11
0420 22	RFF	C	9	2	CARGO CARRIER CODE

		Standard	Implementation		DOR	BBB	VOR	AOR	EOR	ALD	Business Rules
Tag	Name	St Format	St Format	Usage / Remark							
RFF											
C506	Reference	M	M								
1153	Reference code qualifier	M an..3	M an..3	AHY = Freight Forwarder number							
1154	Reference identifier	C an..70	C an..35	CARGO CARRIER CODE For AOR: Mandatory if CONSOLIDATION INDICATOR = CO (Consol)	M		O	M	O	O	The SARS-assigned code of the Broker that reports the House Bill Of Lading/Air Waybill.
1156	Document line identifier	C an..6	N	Not used							
1056	Version identifier	C an..9	N	Not used							
1060	Revision identifier	C an..6	N	Not used							

Remark:

Example:
RFF+AHY:12345678'

Counter No	Tag	St	MaxOcc	Level	Name
0400	SG10	M	999	1	CNI-RFF-SG11
0420 23	RFF	C	9	2	EXTERNAL REFERENCE

Standard		Implementation									
Tag	Name	St Format	St Format	Usage / Remark	DOR	BBB	VOR	AOR	EOR	ALD	Business Rules
RFF											
C506	Reference	M	M								
1153	Reference code qualifier	M an..3	M an..3	AIH = Common transaction reference number							
1154	Reference identifier	C an..70	C an..35	EXTERNAL REFERENCE A reference number assigned by the outturn provider.	O	O	O	O	O	O	
1156	Document line identifier	C an..6	N	Not used							
1056	Version identifier	C an..9	N	Not used							
1060	Revision identifier	C an..6	N	Not used							

Remark:

Example:
RFF+AIH:555666777889900'

No = Consecutive segment number
 MaxOcc = Maximum occurrence of the segment/group
 Counter = Counter of segment/group within the standard
 St = Status
 EDIFACT: M=Mandatory, C=Conditional
 User specific: M=Mandatory, O=Optional, C=Conditional

Counter No	Tag	St	MaxOcc	Level	Name
0400	SG10	M	999	1	CNI-RFF-SG11
0420 24	RFF	C	9	2	MASTER CARGO CARRIER CODE

		Standard	Implementation		DOR	BBB	VOR	AOR	EOR	ALD	Business Rules
Tag	Name	St Format	St Format	Usage / Remark							
RFF											
C506	Reference	M	M								
1153	Reference code qualifier	M an..3	M an..3	AAZ = Standard Carrier Alpha Code (SCAC) number							
1154	Reference identifier	C an..70	C an..35	MASTER CARGO CARRIER CODE	M	M	O	M	O	M	<ul style="list-style-type: none"> The BIC, SCAC or SARS-assigned code of the Carrier that issued the Master / Ocean Bill of Lading The IATA or SARS-assigned code of the Carrier that issued the Master Air Waybill. The SARS-assigned code of the Carrier that reports the Road Freight Manifest The SARS-assigned code "TFR" for Transnet Freight Rail as Rail Carrier For courier cargo where no Master Air Waybill is issued by the carrier the courier must reflect the code "000-" The SARS-assigned code of the Broker in the case of sub-consolidations where a Master House is reported.
1156	Document line identifier	C an..6	N	Not used							
1056	Version identifier	C an..9	N	Not used							
1060	Revision identifier	C an..6	N	Not used							

Remark:

Example:

RFF+AAZ: ABCD'

Counter No	Tag	St	MaxOcc	Level	Name
0400	SG10	M	999	1	CNI-RFF-SG11
0420 25	RFF	C	9	2	MASTER TRANSPORT DOCUMENT NUMBER

Standard		Implementation								Business Rules
Tag	Name	St Format	St Format	Usage / Remark	DOR	BBB	VOR	AOR	EOR	ALD
RFF										
C506	Reference	M	M							
1153	Reference code qualifier	M an..3	M an..3	MB = Master bill of lading number						
1154	Reference identifier	C an..70	C an..35	MASTER TRANSPORT DOCUMENT NUMBER For sea, supply the ocean bill of lading number . For Air, supply the master air waybill number	M	M		M		M
1156	Document line identifier	C an..6	N	Not used						
1056	Version identifier	C an..9	C an..3	CONSOLIDATION INDICATOR For AOR, indicate if cargo is Consol or Straight CO = Consol [Consol – a number of consignments grouped together by a freight forwarder/consolidator as one shipment.] ST = Straight [Straight – a consignment carried under a master air waybill directly to a consignee without being consolidated by a freight forwarder/consolidator] CO = Consol ST = Straight	M	M	O	M	O	O
1060	Revision identifier	C an..6	N	Not used						

Remark:

Example:

RFF+MB:ABCD1234567890ASDFGHJK: :ST'

No = Consecutive segment number
 MaxOcc = Maximum occurrence of the segment/group
 Counter = Counter of segment/group within the standard
 St = Status
 EDIFACT: M=Mandatory, C=Conditional
 User specific: M=Mandatory, O=Optional, C=Conditional

Counter No	Tag	St	MaxOcc	Level	Name
0400	SG10	M	999	1	CNI-RFF-SG11
0420 26	RFF	C	9	2	PARENT TRANSPORT DOCUMENT NUMBER

		Standard	Implementation		DOR	BBB	VOR	AOR	EOR	ALD	Business Rules
Tag	Name	St Format	St Format	Usage / Remark							
RFF											
C506	Reference	M	M								
1153	Reference code qualifier	M an..3	M an..3	XP = Previous cargo control number							
1154	Reference identifier	C an..70	C an..35	PARENT TRANSPORT DOCUMENT NUMBER For sub-consolidations the (Master) House Bill of Lading / Air Waybill number of the consolidating / groupage agent	O	O		O			
1156	Document line identifier	C an..6	N	Not used							
1056	Version identifier	C an..9	N	Not used							
1060	Revision identifier	C an..6	N	Not used							

Remark:

Example:

RFF+XP:WXYZ1234567890LKJHGFDSA'

Counter No	Tag	St	MaxOcc	Level	Name
0400	SG10	M	999	1	CNI-RFF-SG11
0420 27	RFF	C	9	2	LRN EXIT

		Standard	Implementation		DOR	BBB	VOR	AOR	EOR	ALD	Business Rules
Tag	Name	St Format	St Format	Usage / Remark							
RFF											
C506	Reference	M	M								
1153	Reference code qualifier	M an..3	M an..3	ABT = Goods declaration document identifier, Customs							
1154	Reference identifier	C an..70	C an..70	LRN EXIT Mandatory if Outbound	C	C		C			
1156	Document line identifier	C an..6	N	Not used							
1056	Version identifier	C an..9	C an..9	EXPORT PROCEDURE Mandatory if Outbound Declaration CPC RPC PPC	C	C		C			CPC + RPC + PPC
1060	Revision identifier	C an..6	N	Not used							

Remark:

Example:
RFF+ABT:12345678ABC20170815123456::H6000'

No = Consecutive segment number
 MaxOcc = Maximum occurrence of the segment/group
 Counter = Counter of segment/group within the standard
 St = Status
 EDIFACT: M=Mandatory, C=Conditional
 User specific: M=Mandatory, O=Optional, C=Conditional

Counter No	Tag	St	MaxOcc	Level	Name
0430	SG11	C	999	2	GID-FTX-MEA-PCI-SG13-SG14
0440	28 GID	M	1	2	Goods item details

		Standard	Implementation		DOR	BBB	VOR	AOR	EOB	ALD	Business Rules
Tag	Name	St Format	St Format	Usage / Remark							
GID											
1496	Goods item number	C an..6	C n..5	GOODS LINE NUMBER Line Number relevant to the consignment line item as per the Manifest, except for Document Type VOR, in which case a sequentially assigned number must be supplied.	M	M	M	M	M	M	
C213	Number and type of packages	C	C								
7224	Package quantity	C n..8	C n..8	NUMBER OF PACKAGES Number of packages manifested. For Document Type BBB, as far as it relates to bulk cargo, use "1"	M	M		M		M	
7065	Package type description code	C an..17	C an..17	TYPE OF PACKAGES UN Recommendation 21 [NOTE FOLLOWING CODES FOR BULK: Bulk, liquid = VL Bulk, solid, largeparticles("nodules") = VO Bulk, liquefiedgas(atabnormaltemperature/pressure) = VQ Bulk, solid, granularparticles("grains") = VR Bulk, solid, fineparticles("powders") = VY] UN Recommendation 21	M	M	M	M	M	M	
1131	Code list identification code	C an..17	N	Not used							
3055	Code list responsible agency code	C an..3	N	Not used							
7064	Type of packages	C an..35	C an..3	CARGO TYPE INDICATOR DB = Dry bulk LB = Liquid bulk BB = Break Bulk CN = Container	M	M	M	M	M	M	
7233	Packaging related description code	C an..3	N	Not used							
C213	Number and type of packages	C	C								
7224	Package quantity	C n..8	C n..8	NUMBER OF PACKAGES FOUND / PACKED / LOADED Packages found after unpacking. For Document Type BBB, as far as it relates to bulk cargo, use "1".	M	M	M	M	M	M	
7065	Package type description code	C an..17	N	Not used							
1131	Code list identification code	C an..17	N	Not used							
3055	Code list responsible agency code	C an..3	N	Not used							
7064	Type of packages	C an..35	N	Not used							
7233	Packaging related description code	C an..3	N	Not used							
C213	Number and type of packages	C	N								
7224	Package quantity	C n..8	N	Not used							
7065	Package type description code	C an..17	N	Not used							
1131	Code list identification code	C an..17	N	Not used							
3055	Code list responsible agency code	C an..3	N	Not used							
7064	Type of packages	C an..35	N	Not used							
7233	Packaging related description code	C an..3	N	Not used							
C213	Number and type of packages	C	N								
7224	Package quantity	C n..8	N	Not used							
7065	Package type description code	C an..17	N	Not used							
1131	Code list identification code	C an..17	N	Not used							
3055	Code list responsible agency code	C an..3	N	Not used							
7064	Type of packages	C an..35	N	Not used							
7233	Packaging related description code	C an..3	N	Not used							

No = Consecutive segment number
 MaxOcc = Maximum occurrence of the segment/group
 Counter = Counter of segment/group within the standard

St = Status
 EDIFACT: M=Mandatory, C=Conditional
 User specific: M=Mandatory, O=Optional, C=Conditional

		Standard	Implementation									
Tag	Name	St Format	St Format	Usage / Remark	DOR	BBB	VOR	AOR	EOB	ALD	Business Rules	
C213	Number and type of packages	C	N									
7224	Package quantity	C n..8	N	Not used								
7065	Package type description code	C an..17	N	Not used								
1131	Code list identification code	C an..17	N	Not used								
3055	Code list responsible agency code	C an..3	N	Not used								
7064	Type of packages	C an..35	N	Not used								
7233	Packaging related description code	C an..3	N	Not used								

Remark:

Example:
GID+1+10:BX:::BB+9'

No = Consecutive segment number
 MaxOcc = Maximum occurrence of the segment/group
 Counter = Counter of segment/group within the standard
 St = Status
 EDIFACT: M=Mandatory, C=Conditional
 User specific: M=Mandatory, O=Optional, C=Conditional

Counter No	Tag	St	MaxOcc	Level	Name
0430	SG11	C	999	2	GID-FTX-MEA-PCI-SG13-SG14
0490 29	FTX	C	9	3	Condition

		Standard	Implementation									
Tag	Name	St Format	St Format	Usage / Remark		DOR	BBB	VOR	AOR	EOR	ALD	Business Rules
FTX												
4451	Text subject code qualifier	M an..3	M an..3	DAR = Damage remarks								
4453	Free text function code	C an..3	N	Not used								
C107	Text reference	C	C									
4441	Free text description code	M an..17	M an..3	PACKAGE CONDITION CODE 1 = Damaged 2 = Open/Broached 3 = Ullaged/Leaking/Evaporated 4 = Other		O	O	O	O	O	O	
1131	Code list identification code	C an..17	N	Not used								
3055	Code list responsible agency code	C an..3	N	Not used								
C108	Text literal	C	C									
4440	Free text	M an..512	M an..350	PACKAGE CONDITION DESCRIPTION If Package condition code = other - then Mandatory		C	C	C	C	C	C	
4440	Free text	C an..512	N	Not used								
4440	Free text	C an..512	N	Not used								
4440	Free text	C an..512	N	Not used								
4440	Free text	C an..512	N	Not used								
3453	Language name code	C an..3	N	Not used								
4447	Free text format code	C an..3	N	Not used								

Remark:

Example:

FTX+DAR++1+Box opened'

No = Consecutive segment number
 MaxOcc = Maximum occurrence of the segment/group
 Counter = Counter of segment/group within the standard

St = Status
 EDIFACT: M=Mandatory, C=Conditional
 User specific: M=Mandatory, O=Optional, C=Conditional

Counter No	Tag	St	MaxOcc	Level	Name
0430	SG11	C	999	2	GID-FTX-MEA-PCI-SG13-SG14
0490 30	FTX	C	9	3	Contents Found

		Standard	Implementation		DOR	BBB	VOR	AOR	EOR	ALD	Business Rules
Tag	Name	St Format	St Format	Usage / Remark							
FTX											
4451	Text subject code qualifier	M an..3	M an..3	AAQ = Package content's description							
4453	Free text function code	C an..3	C an..3								
C107	Text reference	C	C								
4441	Free text description code	M an..17	M an..17								
1131	Code list identification code	C an..17	N	Not used							
3055	Code list responsible agency code	C an..3	N	Not used							
C108	Text literal	C	C								
4440	Free text	M an..512	M an..350	CONTENTS FOUND TO BE <i>Where there is a discrepancy in contents, then CONTENTS FOUND TO BE, CONTENTS SHOULD BE is Mandatory</i>	C	C		C		C	
4440	Free text	C an..512	N	Not used							
4440	Free text	C an..512	N	Not used							
4440	Free text	C an..512	N	Not used							
4440	Free text	C an..512	N	Not used							
3453	Language name code	C an..3	N	Not used							
4447	Free text format code	C an..3	N	Not used							

Remark:

Example:

FTX+AAQ+1+5 Widgets+X'

No = Consecutive segment number
 MaxOcc = Maximum occurrence of the segment/group
 Counter = Counter of segment/group within the standard
 St = Status
 EDIFACT: M=Mandatory, C=Conditional
 User specific: M=Mandatory, O=Optional, C=Conditional

Counter No	Tag	St	MaxOcc	Level	Name
0430	SG11	C	999	2	GID-FTX-MEA-PCI-SG13-SG14
0490 31	FTX	C	9	3	Contents Should be

Standard		Implementation									Business Rules
Tag	Name	St Format	St Format	Usage / Remark	DOR	BBB	VOR	AOR	EOR	ALD	
FTX											
4451	Text subject code qualifier	M an..3	M an..3	AEC = Text refers to expected data							
4453	Free text function code	C an..3	C an..3								
C107	Text reference	C	C								
4441	Free text description code	M an..17	M an..3	EXCESS/SHORT INDICATOR/CARGO STATUS INDICATOR 1 = Excess [For Document Type BBB, excess or short landed as a result of over carriage.] 5 = Part Shipment [To be used when goods are to be received in part shipments by a temporary storage facility.] 6 = Split Storage [To be used for bulk goods stored at more than one temporary storage facility.] 7 = Overcarried [Unexpected goods received] 8 = Short landed received [Additional goods received against previously short landed consignment] 1 = Excess 2 = Short 3 = None 4 = Unknown 5 = Part Shipment 6 = Split Storage 7 = Overcarried 8 = Short landed received	M	M		M		M	
1131	Code list identification code	C an..17	N	Not used							
3055	Code list responsible agency code	C an..3	N	Not used							
C108	Text literal	C	C								
4440	Free text	M an..512	M an..350	CONTENTS SHOULD BE Mandatory if Excess/Short indicator = 1 or 2.	C	C		C		C	
4440	Free text	C an..512	N	Not used							
4440	Free text	C an..512	N	Not used							
4440	Free text	C an..512	N	Not used							
4440	Free text	C an..512	N	Not used							
3453	Language name code	C an..3	N	Not used							
4447	Free text format code	C an..3	N	Not used							

Remark:

Example:

FTX+AEC+1+2+6 Widgets'

Counter No	Tag	St	MaxOcc	Level	Name
0430	SG11	C	999	2	GID-FTX-MEA-PCI-SG13-SG14
0490 32	FTX	C	9	3	DESCRIPTION OF GOODS

		Standard	Implementation		DOR	BBB	VOR	AOR	EOR	ALD	Business Rules
Tag	Name	St Format	St Format	Usage / Remark							
FTX											
4451	Text subject code qualifier	M an..3	M an..3	AAA = Goods item description							
4453	Free text function code	C an..3	N	Not used							
C107	Text reference	C	N								
4441	Free text description code	M an..17	N	Not used							
1131	Code list identification code	C an..17	N	Not used							
3055	Code list responsible agency code	C an..3	N	Not used							
C108	Text literal	C	C								
4440	Free text	M an..512	M an..512	DESCRIPTION OF GOODS	M	M	M	M	M	M	
4440	Free text	C an..512	N	Not used							
4440	Free text	C an..512	N	Not used							
4440	Free text	C an..512	N	Not used							
4440	Free text	C an..512	N	Not used							
3453	Language name code	C an..3	N	Not used							
4447	Free text format code	C an..3	N	Not used							

Remark:

Example:

FTX+AAA+++6 Widgets 10x10'

Counter No	Tag	St	MaxOcc	Level	Name
0430	SG11	C	999	2	GID-FTX-MEA-PCI-SG13-SG14
0500 33	MEA	C	9	3	Gross Weight

		Standard	Implementation		DOR	BBB	VOR	AOR	EOR	ALD	Business Rules
Tag	Name	St Format	St Format	Usage / Remark							
MEA											
6311	Measurement purpose code qualifier	M an..3	M an..3	AAE = Measurement							
C502	Measurement details	C	C								
6313	Measured attribute code	C an..3	C an..3	AAB = Goods item gross weight							
6321	Measurement significance code	C an..3	N	Not used							
6155	Non-discrete measurement name code	C an..17	N	Not used							
6154	Non-discrete measurement name	C an..70	N	Not used							
C174	Value/range	C	C								
6411	Measurement unit code	C an..8	C an..8	KGM = kilogram	M	M		M		M	
6314	Measure	C an..18	C n..18	GROSS MASS/WEIGHT	M	M		M		M	
6162	Range minimum quantity	C n..18	N	Not used							
6152	Range maximum quantity	C n..18	N	Not used							
6432	Significant digits quantity	C n..2	N	Not used							
7383	Surface or layer code	C an..3	N	Not used							

Remark:

Example:

MEA+AAE+AAB+KGM:123'

Counter No	Tag	St	MaxOcc	Level	Name
0430	SG11	C	999	2	GID-FTX-MEA-PCI-SG13-SG14
0500 34	MEA	C	9	3	Gross Weight Found

		Standard	Implementation		DOR	BBB	VOR	AOR	EOR	ALD	Business Rules
Tag	Name	St Format	St Format	Usage / Remark							
MEA											
6311	Measurement purpose code qualifier	M an..3	M an..3	AAL = Cargo loaded							
C502	Measurement details	C	C								
6313	Measured attribute code	C an..3	C an..3	ACE = Ascertained weight							
6321	Measurement significance code	C an..3	N	Not used							
6155	Non-discrete measurement name code	C an..17	N	Not used							
6154	Non-discrete measurement name	C an..70	N	Not used							
C174	Value/range	C	C								
6411	Measurement unit code	C an..8	C an..8	KGM = kilogram	M	M	M	M	M	M	
6314	Measure	C an..18	C n..18	GROSS WEIGHT FOUND	M	M	M	M	M	M	
6162	Range minimum quantity	C n..18	N	Not used							
6152	Range maximum quantity	C n..18	N	Not used							
6432	Significant digits quantity	C n..2	N	Not used							
7383	Surface or layer code	C an..3	N	Not used							

Remark:

Example:

MEA+AAL+AAB+KGM:185'

Counter No	Tag	St	MaxOcc	Level	Name
0430	SG11	C	999	2	GID-FTX-MEA-PCI-SG13-SG14
0500 35	MEA	C	9	3	Gross Litres

		Standard	Implementation		DOR	BBB	VOR	AOR	EOR	ALD	Business Rules
Tag	Name	St Format	St Format	Usage / Remark							
MEA											
6311	Measurement purpose code qualifier	M an..3	M an..3	AAE = Measurement							
C502	Measurement details	C	C								
6313	Measured attribute code	C an..3	C an..3	ACE = Ascertained weight							
6321	Measurement significance code	C an..3	N	Not used							
6155	Non-discrete measurement name code	C an..17	N	Not used							
6154	Non-discrete measurement name	C an..70	N	Not used							
C174	Value/range	C	C								
6411	Measurement unit code	C an..8	C an..8	LTR = litre	O	C		O			
6314	Measure	C an..18	C n..18	GROSS LITRES Gross litres manifested. Mandatory for liquid bulk.	O	C		O			
6162	Range minimum quantity	C n..18	N	Not used							
6152	Range maximum quantity	C n..18	N	Not used							
6432	Significant digits quantity	C n..2	N	Not used							
7383	Surface or layer code	C an..3	N	Not used							

Remark:

Example:

MEA+AAE+AAB+LTR:100'

Counter No	Tag	St	MaxOcc	Level	Name
0430	SG11	C	999	2	GID-FTX-MEA-PCI-SG13-SG14
0500 36	MEA	C	9	3	Gross Litres Found

		Standard	Implementation		DOR	BBB	VOR	AOR	EOR	ALD	Business Rules
Tag	Name	St Format	St Format	Usage / Remark							
MEA											
6311	Measurement purpose code qualifier	M an..3	M an..3	AAL = Cargo loaded							
C502	Measurement details	C	C								
6313	Measured attribute code	C an..3	C an..3	AAB = Goods item gross weight							
6321	Measurement significance code	C an..3	N	Not used							
6155	Non-discrete measurement name code	C an..17	N	Not used							
6154	Non-discrete measurement name	C an..70	N	Not used							
C174	Value/range	C	C								
6411	Measurement unit code	C an..8	C an..8	If the cargo is liquid bulk, the Gross Litres, and Gross Litres found fields become mandatory. LTR = litre	C	C	C	C			
6314	Measure	C an..18	C n..18	GROSS LITRES FOUND If the cargo is liquid bulk, the Gross Litres, and Gross Litres found fields become mandatory. Gross litres found on unpacking. Mandatory for liquid bulk.	C	C	C	C			
6162	Range minimum quantity	C n..18	N	Not used							
6152	Range maximum quantity	C n..18	N	Not used							
6432	Significant digits quantity	C n..2	N	Not used							
7383	Surface or layer code	C an..3	N	Not used							

Remark:

Example:

MEA+AAL+AAB+LTR: 65'

Counter No	Tag	St	MaxOcc	Level	Name
0430	SG11	C	999	2	GID-FTX-MEA-PCI-SG13-SG14
0510 37	PCI	C	9	3	Package identification

		Standard	Implementation		DOR	BBB	VOR	AOR	EOR	ALD	Business Rules
Tag	Name	St Format	St Format	Usage / Remark							
PCI											
4233	Marking instructions code	C an..3	C an..3	24 = Shipper assigned							
C210	Marks & labels	C	C								
7102	Shipping marks description	M an..35	M an..35	MARKS AND NUMBERS - 1 <i>Mandatory on CARGO TYPE INDICATOR = Break Bulk. If LB, DB then N/A</i>	M	C	C	M	M	M	
7102	Shipping marks description	C an..35	C an..35	MARKS AND NUMBERS - 2	O	O	O	O	O	O	
7102	Shipping marks description	C an..35	C an..35	MARKS AND NUMBERS - 3	M	C	C	M	M	M	
7102	Shipping marks description	C an..35	C an..35	MARKS AND NUMBERS - 4	M	C	C	M	M	M	
7102	Shipping marks description	C an..35	C an..35	MARKS AND NUMBERS - 5	M	C	C	M	M	M	
7102	Shipping marks description	C an..35	C an..35	MARKS AND NUMBERS - 6	M	C	C	M	M	M	
7102	Shipping marks description	C an..35	C an..35	MARKS AND NUMBERS - 7	M	C	C	M	M	M	
7102	Shipping marks description	C an..35	C an..35	MARKS AND NUMBERS - 8	M	C	C	M	M	M	
7102	Shipping marks description	C an..35	C an..35	MARKS AND NUMBERS - 9	M	C	C	M	M	M	
7102	Shipping marks description	C an..35	C an..35	MARKS AND NUMBERS - 10	M	C	C	M	M	M	
8169	Full or empty indicator code	C an..3	N	Not used							
C827	Type of marking	C	N								
7511	Marking type code	M an..3	N	Not used							
1131	Code list identification code	C an..17	N	Not used							
3055	Code list responsible agency code	C an..3	N	Not used							

Remark:

Example:

PCI+24+Marks and numbers 1:Marks and numbers 2:Marks and numbers 3:Marks and numbers 4:Marks and numbers 5:Marks and numbers 6:Marks and numbers 7:Marks and numbers 8:Marks and numbers 9:Marks and numbers 10'

Counter No	Tag	St	MaxOcc	Level	Name
0530	SG13	M	999	3	SGP
0540 38	SGP	M	1	3	Split goods placement

		Standard	Implementation		DOR	BBB	VOR	AOR	EOR	ALD	Business Rules
Tag	Name	St Format	St Format	Usage / Remark							
SGP											
C237	Equipment identification	M	M								
8260	Equipment identifier	C an..17	C an..17	CONTAINER NUMBER/WAGON NUMBER Container number that contains this consignment. Use 1 for non-containerized cargo.	M		M	M	M	M	Container number that contains this consignment. Use 1 for non-containerized cargo.
1131	Code list identification code	C an..17	N	Not used							
3055	Code list responsible agency code	C an..3	N	Not used							
3207	Country identifier	C an..3	N	Not used							
7224	Package quantity	C n..8	C n..8	CONTAINER CONTENT The actual number of packages in the container for this consignment.	M		O		O	O	The actual number of packages in the container for this consignment.

Remark:

Example:

SGP+NONU1234567+9'

Counter No	Tag	St	MaxOcc	Level	Name
0560	SG14	C	99	3	DGS
0570 39	DGS	M	1	3	Dangerous goods

Standard		Implementation									Business Rules
Tag	Name	St Format	St Format	Usage / Remark	DOR	BBB	VOR	AOR	EOR	ALD	
DGS											
8273	Dangerous goods regulations code	C an..3	C an..3								For Air, use IATA Dangerous Goods Code and for rail use TFR dangerous goods code
C205	Hazard code	C	C								
8351	Hazard identification code	M an..7	M an..7	DANGEROUS GOODS CODE/CLASS				O	O	O	Reference ??
8078	Additional hazard classification identifier	C an..7	N	Not used							
8092	Hazard code version identifier	C an..10	N	Not used							
C234	UNDG information	C	C								
7124	United Nations Dangerous Goods (UNDG) identifier	C n4	C n4	UNDG NUMBER	O	O	O				
7088	Dangerous goods flashpoint description	C an..8	N	Not used							
C223	Dangerous goods shipment flashpoint	C	N								
7106	Shipment flashpoint degree	C n3	N	Not used							
6411	Measurement unit code	C an..8	N	Not used							
8339	Packaging danger level code	C an..3	N	Not used							
8364	Emergency procedure for ships identifier	C an..8	N	Not used							
8410	Hazard medical first aid guide identifier	C an..4	N	Not used							
8126	Transport emergency card identifier	C an..10	N	Not used							
C235	Hazard identification placard details	C	N								
8158	Orange hazard placard upper part identifier	C an..4	N	Not used							
8186	Orange hazard placard lower part identifier	C an4	N	Not used							
C236	Dangerous goods label	C	N								
8246	Dangerous goods marking identifier	C an..4	N	Not used							
8246	Dangerous goods marking identifier	C an..4	N	Not used							
8246	Dangerous goods marking identifier	C an..4	N	Not used							
8246	Dangerous goods marking identifier	C an..4	N	Not used							
8255	Packing instruction type code	C an..3	N	Not used							
8179	Transport means description code	C an..8	N	Not used							
8211	Hazardous cargo transport authorisation code	C an..3	N	Not used							
C289	Tunnel Restriction	C	N								
8461	Tunnel Restriction Code	C an..6	N	Not used							
1131	Code list identification code	C an..17	N	Not used							
3055	Code list responsible agency code	C an..3	N	Not used							

Remark:

Example:

DGS++1636+1636'

No = Consecutive segment number
 MaxOcc = Maximum occurrence of the segment/group
 Counter = Counter of segment/group within the standard

St = Status
 EDIFACT: M=Mandatory, C=Conditional
 User specific: M=Mandatory, O=Optional, C=Conditional

Counter No	Tag	St	MaxOcc	Level	Name	
0660	40	CNT	C	1	0	Control total

		Standard	Implementation								Business Rules
Tag	Name	St Format	St Format	Usage / Remark	DOR	BBB	VOR	AOR	EOR	ALD	
CNT											
C270	Control	M	M								
6069	Control total type code qualifier	M an..3	M an..3	8 = Total pieces							
6066	Control total quantity	M n..18	M n..18	TOTAL NUMBER OF PACKAGES/CONTAINERS FOUND	M	M	M	M	M	M	For all cargo, i.e. containerised cargo, bulk and break-bulk, the field TOTAL NUMBER OF PACKAGES must contain the accumulated total of all NUMBER OF PACKAGES FOUND fields reported within the COSTCO message.
6411	Measurement unit code	C an..8	N	Not used							

Remark:

Example:
CNT+8:9'

Counter	No	Tag	St	MaxOcc	Level	Name
---------	----	-----	----	--------	-------	------

0000 42 **UNZ** M 1 0 Interchange trailer

		Standard	Implementation								Business Rules
Tag	Name	St Format	St Format	Usage / Remark	DOR	BBB	VOR	AOR	EOR	ALD	
UNZ											
0036	Interchange control count	M n..6	M n..6	Number of messages in interchange	M	M	M	M	M	M	
0020	Interchange control reference	M an..14	M an..14	Must match Interchange control reference in UNB	M	M	M	M	M	M	

Remark:

Example:
UNZ+1+1234567890'

No = Consecutive segment number
 MaxOcc = Maximum occurrence of the segment/group
 Counter = Counter of segment/group within the standard
 St = Status
 EDIFACT: M=Mandatory, C=Conditional
 User specific: M=Mandatory, O=Optional, C=Conditional